

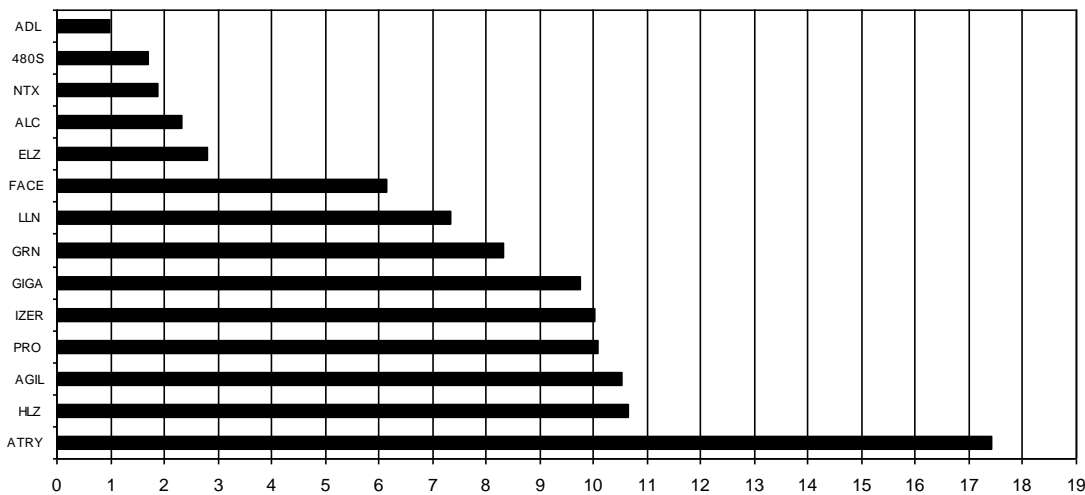
Composición del índice IBEX GROWTH MARKET 15 al cierre de la sesión: 28/05/2021

Cod.	Valor	Ajuste Free-Float	# Acciones	Cierre €	Capitalización €	% Ponderación
Sym.	Company	Free-Float Adjust.	# of Shares	Closing €	Capitalisation €	% Weighting
ATRY	ATRY S	70%	16.157.378	8,4000	135.721.975,2000	17,42
HLZ	HOLALUZ	30%	6.173.845	13,4500	83.038.215,2500	10,66
AGIL	AGILE CONTEN	50%	10.523.503	7,8000	82.083.323,4000	10,53
PRO	PROEDUCA	10%	4.517.897	17,4000	78.611.407,8000	10,09
IZER	IZERTIS	40%	9.047.892	8,6400	78.173.786,8800	10,03
GIGA	GIGAS HOSTIN	100%	7.719.365	9,8600	76.112.938,9000	9,77
GRN	GREENALIA	20%	4.246.694	15,2500	64.762.083,5000	8,31
LLN	LLEIDANETWOR	60%	9.629.966	5,9400	57.201.998,0400	7,34
FACE	FACEPHI BIO	80%	11.732.780	4,0900	47.987.070,2000	6,16
ELZ	ELZINC	40%	10.284.133	2,1200	21.802.361,9600	2,80
ALC	ALTIA CONSUL	10%	687.819	26,4000	18.158.421,6000	2,33
NTX	NETEX	40%	3.546.244	4,1000	14.539.600,4000	1,87
480S	CUATROOCHENT	30%	667.372	19,9000	13.280.702,8000	1,70
ADL	ADL BIONATUR	30%	11.977.434	0,6500	7.785.332,1000	1,00
<i>106.912.322</i>						<i>100,00</i>

IBEX GROWTH MARKET 15 de cierre: 2.415,9

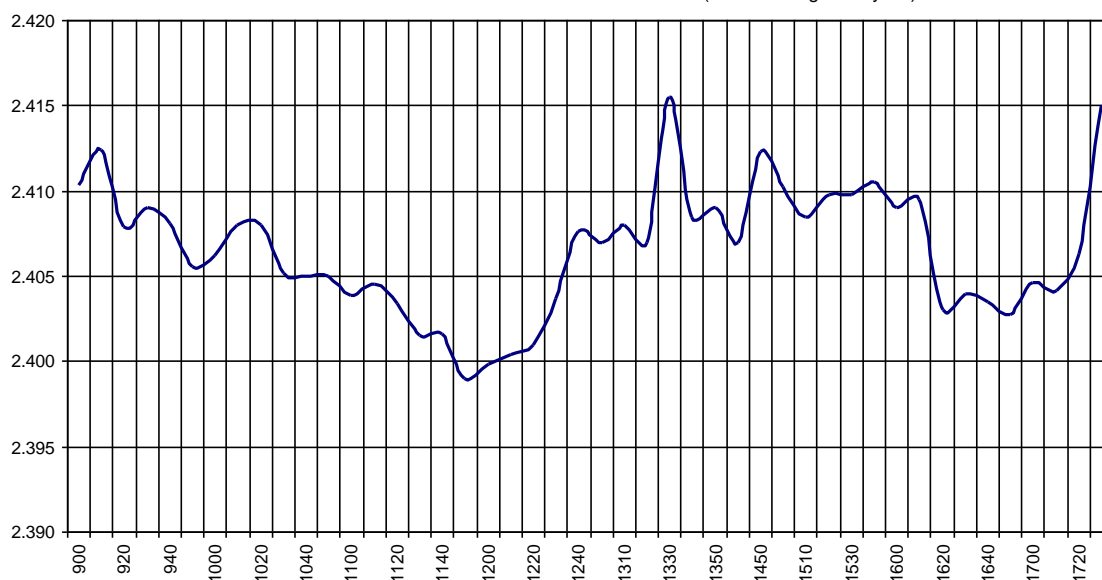
Capitalización Total I : 779.259.218,0300 €

% Ponderación IBEX GROWTH MARKET 15



IBEX Growth Market 15						Hora
						Time
Anterior	Previous	2.410,2	Máximo	Max	2.419,7	13:35:10
Inicial	Open	2.406,4	Mínimo	Min	2.398,5	11:55:42
Cierre	Close	2.415,9	Variación	Change	+5,7	
Medio	Mid	2.407,5	%Variación	%change	0,24%	

Valor medio del índice IBEX Growth Market 15 cada 10' (Index Average every 10')



Hechos Relevantes Públicos que afectan al IBEX GROWTH MARKET 15

Relevant Facts related to IBEX GROWTH MARKET 15 index