

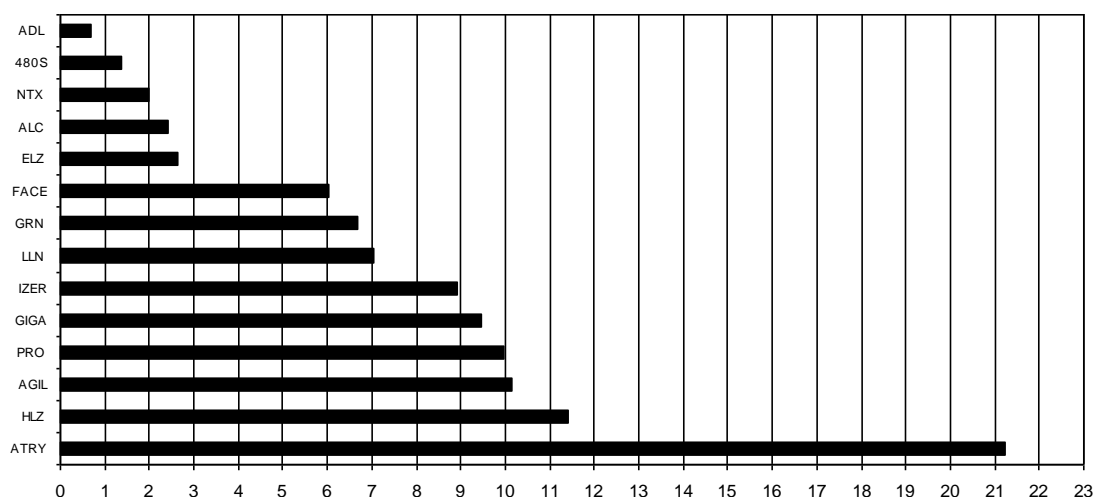
## Composición del índice IBEX GROWTH MARKET 15 al cierre de la sesión: 10/08/2021

Cod.	Valor	Ajuste Free-Float	# Acciones	Cierre €	Capitalización €	% Ponderación
Sym.	Company	Free-Float Adjust.	# of Shares	Closing €	Capitalisation €	% Weighting
ATRY	ATRY S	70%	16.157.378	10,2500	165.613.124,5000	21,23
HLZ	HOLALUZ	30%	6.173.845	14,4000	88.903.368,0000	11,40
AGIL	AGILE CONTEN	50%	10.523.503	7,5200	79.136.742,5600	10,14
PRO	PROEDUCA	10%	4.517.897	17,2000	77.707.828,4000	9,96
GIGA	GIGAS HOSTIN	100%	7.719.365	9,5600	73.797.129,4000	9,46
IZER	IZERTIS	40%	9.047.892	7,7000	69.668.768,4000	8,93
LLN	LLEIDANETWOR	60%	9.629.966	5,7000	54.890.806,2000	7,04
GRN	GREENALIA	20%	4.246.694	12,3000	52.234.336,2000	6,70
FACE	FACEPHI BIO	80%	12.107.458	3,8800	46.976.937,0400	6,02
ELZ	ELZINC	40%	10.284.133	1,9950	20.516.845,3350	2,63
ALC	ALTIA CONSUL	10%	687.819	27,6000	18.983.804,4000	2,43
NTX	NETEX	40%	3.546.244	4,4000	15.603.473,6000	2,00
480S	CUATROOCHENT	30%	667.372	16,2000	10.811.426,4000	1,39
ADL	ADL BIONATUR	30%	12.122.595	0,4360	5.285.451,4200	0,68
<b>107.432.161</b>						<b>100,00</b>

**IBEX GROWTH MARKET 15 de cierre: 2.412,5**

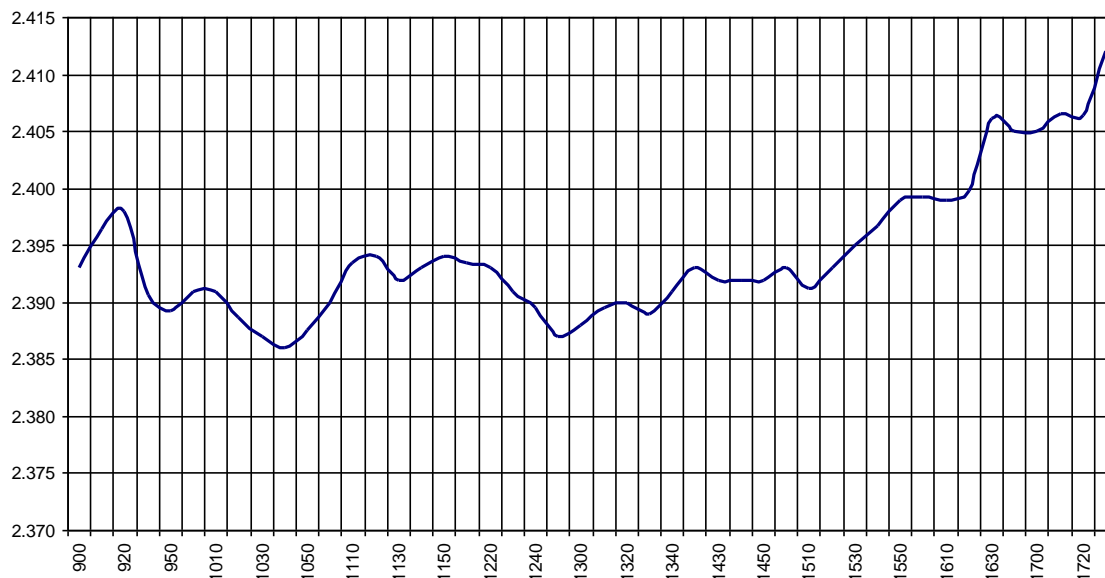
**Capitalización Total I: 780.130.041,8550 €**

% Ponderación IBEX GROWTH MARKET 15



IBEX Growth Market 15			Hora			
			Time			
Anterior	Previous	2.392,5	Máximo	Max	2.413,4	16:35:05
Inicial	Open	2.394,8	Mínimo	Min	2.385,7	10:55:25
Cierre	Close	2.412,5	Variación	Change	+20	
Medio	Mid	2.396,6	%Variación	%change	0,84%	

Valor medio del índice IBEX Growth Market 15 cada 10' (Index Average every 10')



**Hechos Relevantes Públicos que afectan al IBEX GROWTH MARKET 15**

**Relevant Facts related to IBEX GROWTH MARKET 15 index**