

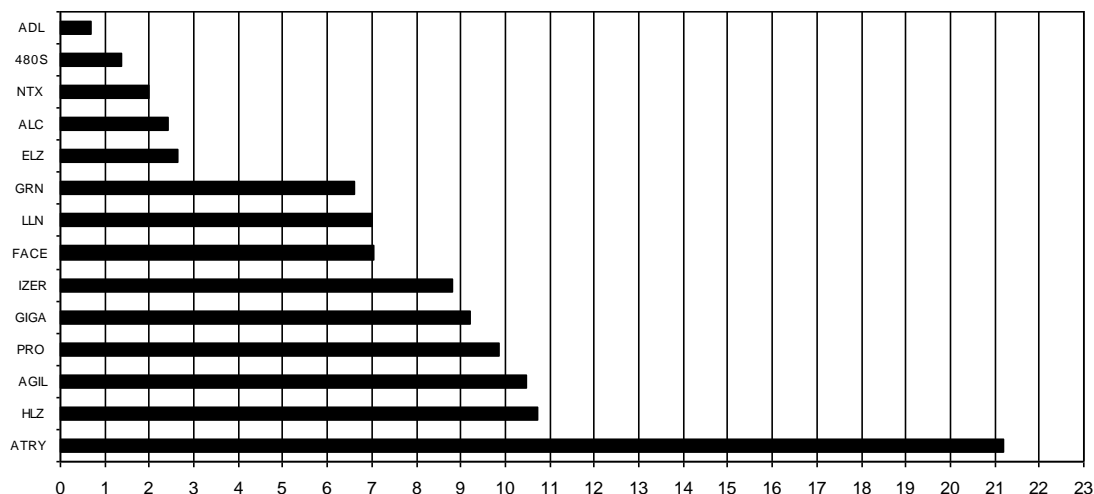
## Composición del índice IBEX GROWTH MARKET 15 al cierre de la sesión: 11/08/2021

Cod.	Valor	Ajuste Free-Float	# Acciones	Cierre €	Capitalización €	% Ponderación
Sym.	Company	Free-Float Adjust.	# of Shares	Closing €	Capitalisation €	% Weighting
ATRY	ATRY S	70%	16.157.378	10,3500	167.228.862,3000	21,19
HLZ	HOLALUZ	30%	6.173.845	13,7000	84.581.676,5000	10,72
AGIL	AGILE CONTEN	50%	10.523.503	7,8600	82.714.733,5800	10,48
PRO	PROEDUCA	10%	4.517.897	17,2000	77.707.828,4000	9,85
GIGA	GIGAS HOSTIN	100%	7.719.365	9,4000	72.562.031,0000	9,20
IZER	IZERTIS	40%	9.047.892	7,6800	69.487.810,5600	8,81
FACE	FACEPHI BIO	80%	12.107.458	4,6000	55.694.306,8000	7,06
LLN	LLEIDANETWOR	60%	9.629.966	5,7500	55.372.304,5000	7,02
GRN	GREENALIA	20%	4.246.694	12,3000	52.234.336,2000	6,62
ELZ	ELZINC	40%	10.284.133	2,0100	20.671.107,3300	2,62
ALC	ALTIA CONSUL	10%	687.819	27,6000	18.983.804,4000	2,41
NTX	NETEX	40%	3.546.244	4,4000	15.603.473,6000	1,98
480S	CUATROOCHENT	30%	667.372	16,2000	10.811.426,4000	1,37
ADL	ADL BIONATUR	30%	12.122.595	0,4500	5.455.167,7500	0,69
<b>107.432.161</b>						<b>100,00</b>

**IBEX GROWTH MARKET 15 de cierre: 2.440,3**

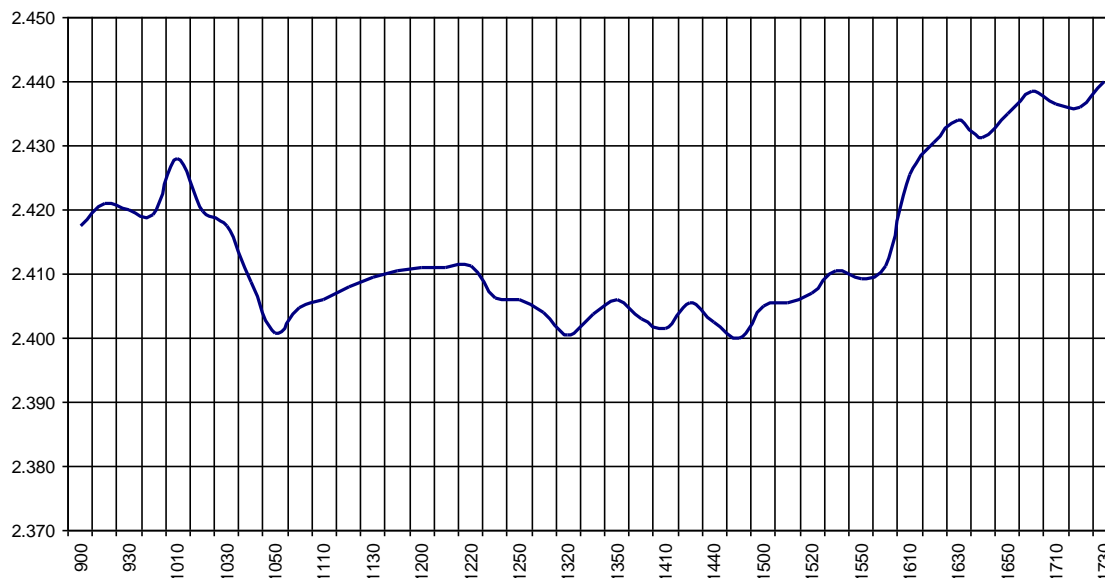
**Capitalización Total I : 789.108.869,3200 €**

% Ponderación IBEX GROWTH MARKET 15



IBEX Growth Market 15			Hora			
			Time			
Anterior	Previous	2.412,5	Máximo	Max	2.441,7	17:27:24
Inicial	Open	2.405,5	Mínimo	Min	2.396,5	14:54:59
Cierre	Close	2.440,3	Variación	Change	+27,8	
Medio	Mid	2.418,6	%Variación	%change	1,15%	

Valor medio del índice IBEX Growth Market 15 cada 10' (Index Average every 10')



### Hechos Relevantes Públicos que afectan al IBEX GROWTH MARKET 15

### Relevant Facts related to IBEX GROWTH MARKET 15 index