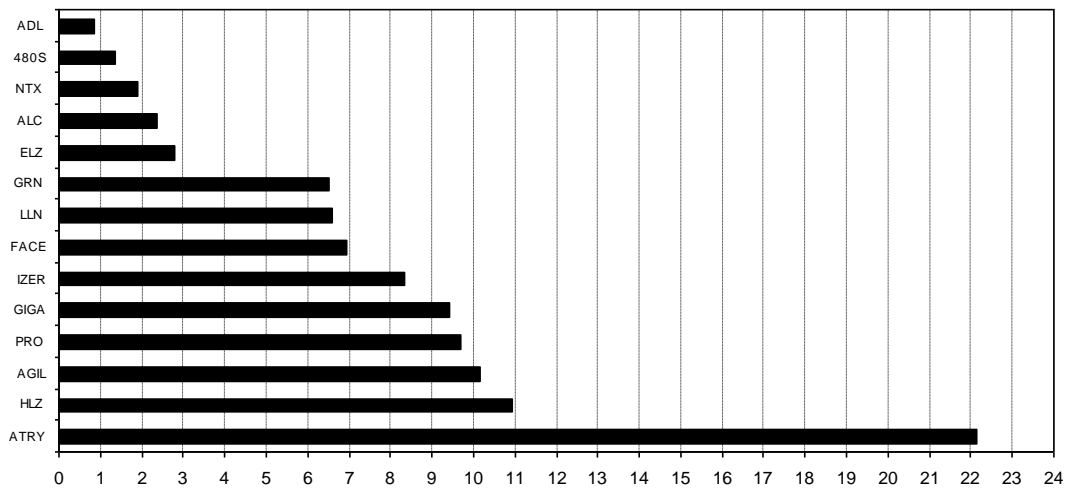


Composición del índice IBEX GROWTH MARKET 15 al cierre de: 13/08/2021 antes de ajuste
Index constituents of IBEX GROWTH MARKET 15 at the closing of: 13/08/2021 before adjustment

Cód. Sym.	Valor Company	Ajuste Free-Float Free-Float Adjust.	# Acciones # Shares	Cierre € Closing €	Capitalización € Capitalisation €	% Ponderación % Weighting
ATRY	ATRY S	70%	16.157.378	11,0000	177.731.158,0000	22,15
HLZ	HOLALUZ	30%	6.173.845	14,2000	87.668.599,0000	10,93
AGIL	AGILE CONTEN	50%	10.523.503	7,7400	81.451.913,2200	10,15
PRO	PROEDUCA	10%	4.517.897	17,2000	77.707.828,4000	9,69
GIGA	GIGAS HOSTIN	100%	7.719.365	9,7800	75.495.389,7000	9,41
IZER	IZERTIS	40%	9.047.892	7,3800	66.773.442,9600	8,32
FACE	FACEPHI BIO	80%	12.107.458	4,6000	55.694.306,8000	6,94
LLN	LLEIDANETWOR	60%	9.629.966	5,5000	52.964.813,0000	6,60
GRN	GREENALIA	20%	4.246.694	12,3000	52.234.336,2000	6,51
ELZ	ELZINC	40%	10.284.133	2,1900	22.522.251,2700	2,81
ALC	ALTIA CONSUL	10%	687.819	27,8000	19.121.368,2000	2,38
NTX	NETEX	40%	3.546.244	4,3000	15.248.849,2000	1,90
480S	CUATROOCHENT	30%	667.372	16,2000	10.811.426,4000	1,35
ADL	ADL BIONATUR	30%	12.122.595	0,5620	6.812.898,3900	0,85
			107.432.161			100,00

IBEX GROWTH MARKET 15 de cierre: 2.480,9 Capitalización total: 802.238.580,7400 €

% Ponderación IBEX GROWTH MARKET 15



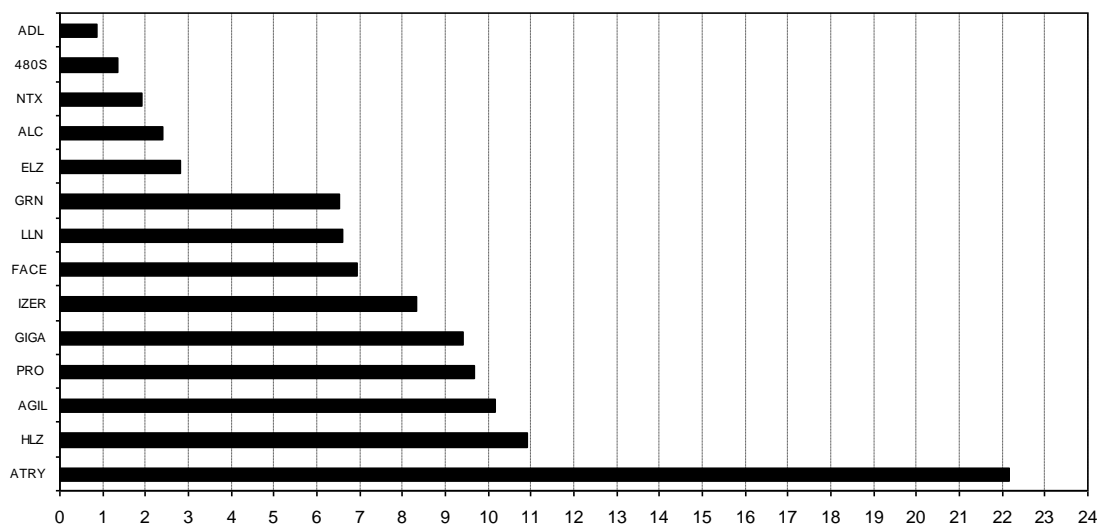
Composición del índice IBEX GROWTH MARKET 15 al cierre de: 13/08/2021 después de ajuste

Index constituents of IBEX GROWTH MARKET 15 at the closing of: 13/08/2021 after adjustment

Cód. Sym.	Valor Company	Ajuste Free-Float Free-Float Adjust.	# Acciones # Shares	Cierre € Closing €	Capitalización € Capitalisation €	% Ponderación % Weighting
ATRY	ATRY S	70%	16.157.378	11,0000	177.731.158,0000	22,15
HLZ	HOLALUZ	30%	6.173.845	14,2000	87.668.599,0000	10,93
AGIL	AGILE CONTEN	50%	10.523.503	7,7400	81.451.913,2200	10,15
PRO	PROEDUCA	10%	4.517.897	17,2000	77.707.828,4000	9,69
GIGA	GIGAS HOSTIN	100%	7.719.365	9,7800	75.495.389,7000	9,41
IZER	IZERTIS	40%	9.047.892	7,3800	66.773.442,9600	8,32
FACE	FACEPHI BIO	80%	12.107.458	4,6000	55.694.306,8000	6,94
LLN	LLEIDANETWOR	60%	9.629.966	5,5000	52.964.813,0000	6,60
GRN	GREENALIA	20%	4.246.694	12,3000	52.234.336,2000	6,51
ELZ	ELZINC	40%	10.284.133	2,1900	22.522.251,2700	2,81
ALC	ALTIA CONSUL	10%	687.819	27,8000	19.121.368,2000	2,38
NTX	NETEX	40%	3.546.244	4,3000	15.248.849,2000	1,90
480S	CUATROOCHENT	30%	667.372	16,2000	10.811.426,4000	1,35
ADL	ADL BIONATUR	30%	12.285.639	0,5620	6.904.529,1180	0,86
107.595.205						100,00

IBEX GROWTH MARKET 15 de cierre: 2.480,9 Capitalización total: 802.330.211,4680 €

% Ponderación IBEX GROWTH MARKET 15



Informe de ajuste IBEX GROWTH MARKET 15

IBEX GROWTH MARKET 15 adjustment report

13/08/2021 18:17:15

Indice antes de ajuste <i>Index before adjustment</i>	Indice después de ajuste <i>Index after adjustment</i>	Capitalización antes de ajuste <i>Market Capitalisation before adjustment</i>	Capitalización después de ajuste <i>Market Capitalisation after adjustment</i>	"J" de ajuste <i>"J" (Mkt. K2 - K1)</i>	Divisor IBEX GROWTH 15 <i>IBEX GROWTH 15 Divisor</i>
2.480,9	2.480,9	802.238.580,7400	802.330.211,4680	91.630,7280	323.402

Símbolo <i>Sym.</i>	Títulos antes de ajuste <i>Shares before adjustment</i>	Títulos después de ajuste <i>Shares after adjustment</i>	Capitalización antes de ajuste <i>Capitalisation before adjustment</i>	Capitalización después de ajuste <i>Capitalisation after adjustment</i>	Diferencia de Capitalizaciones <i>Capitalisation difference</i>
ADL	12.122.595	12.285.639	6.812.898,3900	6.904.529,1180	91.630,7280

Bajas en IBEX GROWTH MARKET 15

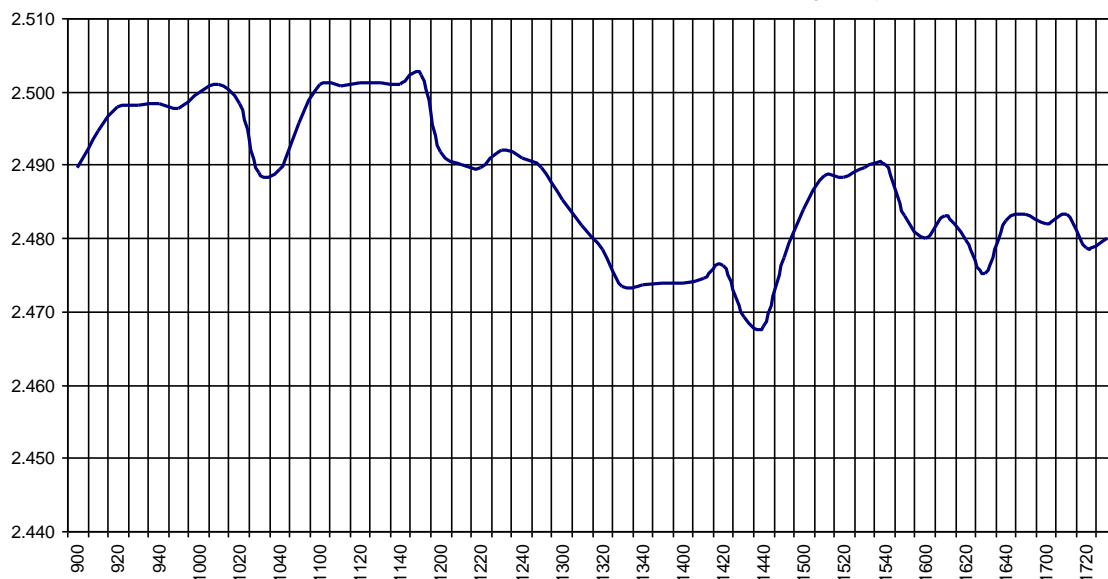
IBEX GROWTH MARKET 15 deletions

Altas en IBEX GROWTH MARKET 15

IBEX GROWTH MARKET 15 additions

IBEX Growth Market 15			Hora			
			Time			
Anterior	Previous	2.483,2	Máximo	Max	2.505,2	11:56:15
Inicial	Open	2.486,1	Mínimo	Min	2.463,1	14:41:59
Cierre	Close	2.480,9	Variación	Change	-2,3	
Medio	Mid	2.485,9	%Variación	%change	-0,09%	

Valor medio del índice IBEX Growth Market 15 cada 10' (Index Average every 10')

**Hechos Relevantes Públicos que afectan al IBEX GROWTH MARKET 15****Hechos Relevantes que afectan al cálculo del índice IBEX Growth Market 15**

16/08/2021 ADL ADL BIONATUR AJUSTE POR INTEGRACIÓN DE 163.044 ACCS.

Relevant Facts related to IBEX GROWTH MARKET 15 index**Relevant Facts related to IBEX Growth Market 15 index calculation**

16/08/2021 ADL ADL BIONATUR ADJUSTMENT FOR INTEGRATION 163,044 SHARES