

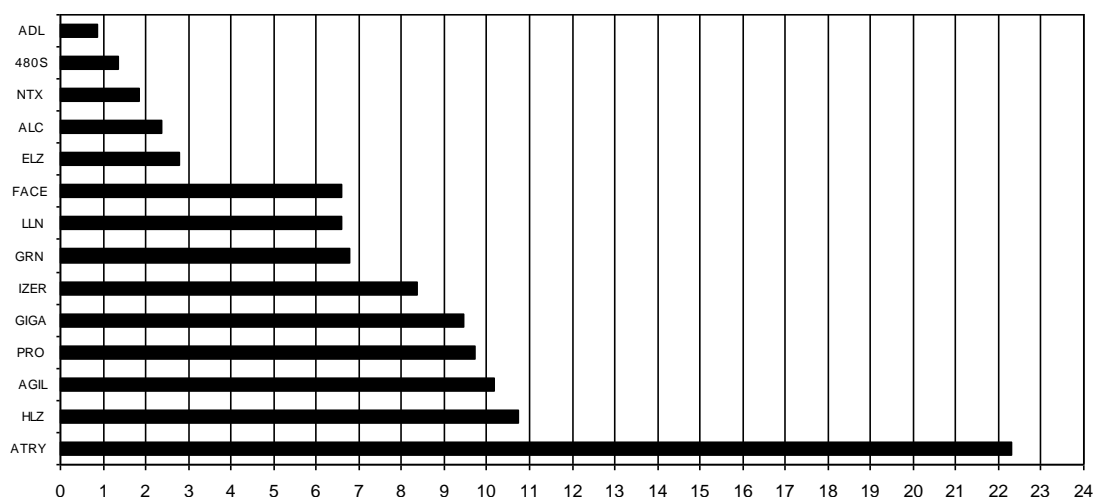
## Composición del índice IBEX GROWTH MARKET 15 al cierre de la sesión: 16/08/2021

Cod.	Valor	Ajuste Free-Float	# Acciones	Cierre €	Capitalización €	% Ponderación
Sym.	Company	Free-Float Adjust.	# of Shares	Closing €	Capitalisation €	% Weighting
ATRY	ATRY S	70%	16.157.378	11,0500	178.539.026,9000	22,32
HLZ	HOLALUZ	30%	6.173.845	13,9000	85.816.445,5000	10,73
AGIL	AGILE CONTEN	50%	10.523.503	7,7400	81.451.913,2200	10,18
PRO	PROEDUCA	10%	4.517.897	17,2000	77.707.828,4000	9,71
GIGA	GIGAS HOSTIN	100%	7.719.365	9,7800	75.495.389,7000	9,44
IZER	IZERTIS	40%	9.047.892	7,3800	66.773.442,9600	8,35
GRN	GREENALIA	20%	4.246.694	12,8000	54.357.683,2000	6,80
LLN	LLEIDANETWOR	60%	9.629.966	5,4900	52.868.513,3400	6,61
FACE	FACEPHI BIO	80%	12.107.458	4,3500	52.667.442,3000	6,58
ELZ	ELZINC	40%	10.284.133	2,1700	22.316.568,6100	2,79
ALC	ALTIA CONSUL	10%	687.819	27,8000	19.121.368,2000	2,39
NTX	NETEX	40%	3.546.244	4,2000	14.894.224,8000	1,86
480S	CUATROOCHENT	30%	667.372	16,2000	10.811.426,4000	1,35
ADL	ADL BIONATUR	30%	12.285.639	0,5760	7.076.528,0640	0,88
<b>107.595.205</b>						<b>100,00</b>

**IBEX GROWTH MARKET 15 de cierre: 2.473,4**

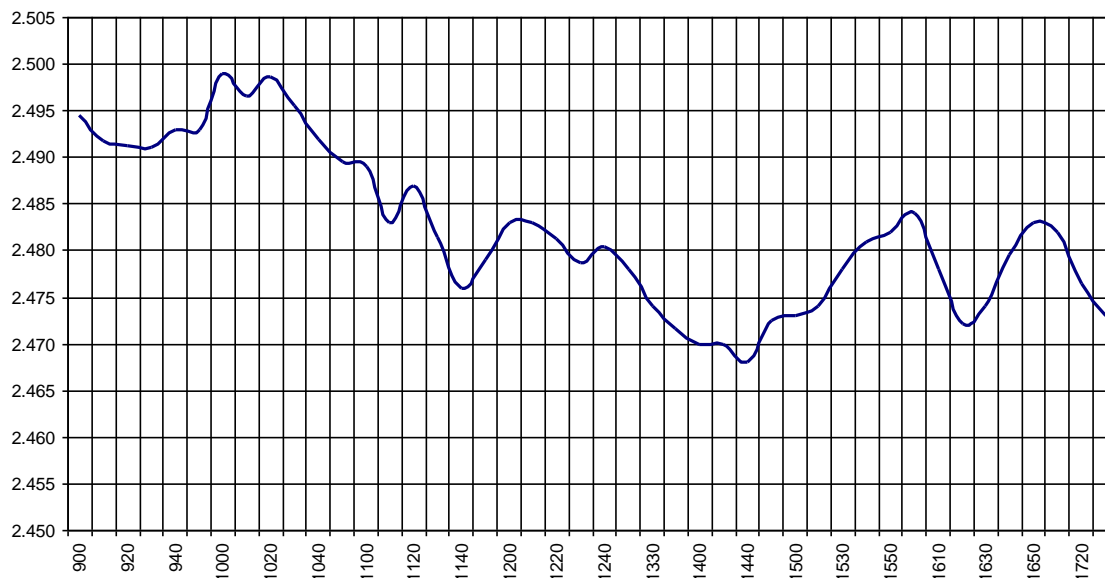
**Capitalización Total I : 799.897.801,5940 €**

% Ponderación IBEX GROWTH MARKET 15



IBEX Growth Market 15			Hora			
			Time			
Anterior	Previous	2.480,9	Máximo	Max	2.499,6	10:07:12
Inicial	Open	2.495,7	Mínimo	Min	2.468,5	14:46:18
Cierre	Close	2.473,4	Variación	Change	-7,5	
Medio	Mid	2.484,4	%Variación	%change	-0,30%	

Valor medio del índice IBEX Growth Market 15 cada 10' (Index Average every 10')



**Hechos Relevantes Públicos que afectan al IBEX GROWTH MARKET 15**

**Relevant Facts related to IBEX GROWTH MARKET 15 index**