

Composición del índice IBEX GROWTH MARKET 15 al cierre de la sesión: 10/09/2021

Cod.	Valor	Ajuste Free-Float	# Acciones	Cierre €	Capitalización €	% Ponderación
Sym.	Company	Free-Float Adjust.	# of Shares	Closing €	Capitalisation €	% Weighting
ATRY	ATRY S	70%	16.157.378	10,9000	176.115.420,2000	21,46
GIGA	GIGAS HOSTIN	100%	7.719.365	10,8500	83.755.110,2500	10,21
HLZ	HOLALUZ	30%	6.173.845	13,4000	82.729.523,0000	10,08
AGIL	AGILE CONTEN	50%	10.523.503	7,5000	78.926.272,5000	9,62
PRO	PROEDUCA	10%	4.517.897	17,1500	77.481.933,5500	9,44
IZER	IZERTIS	40%	9.316.444	7,8200	72.854.592,0800	8,88
GRN	GREENALIA	20%	4.246.694	16,0000	67.947.104,0000	8,28
FACE	FACEPHI BIO	80%	12.107.458	5,0200	60.779.439,1600	7,41
LLN	LLEIDANETWOR	60%	9.629.966	5,1500	49.594.324,9000	6,04
ELZ	ELZINC	40%	10.284.133	1,9450	20.002.638,6850	2,44
ALC	ALTIA CONSUL	10%	687.819	27,8000	19.121.368,2000	2,33
NTX	NETEX	40%	3.546.244	4,0200	14.255.900,8800	1,74
480S	CUATROOCHENT	30%	667.372	16,7000	11.145.112,4000	1,36
ADL	ADL BIONATUR	30%	12.555.281	0,4700	5.900.982,0700	0,72
						100,00

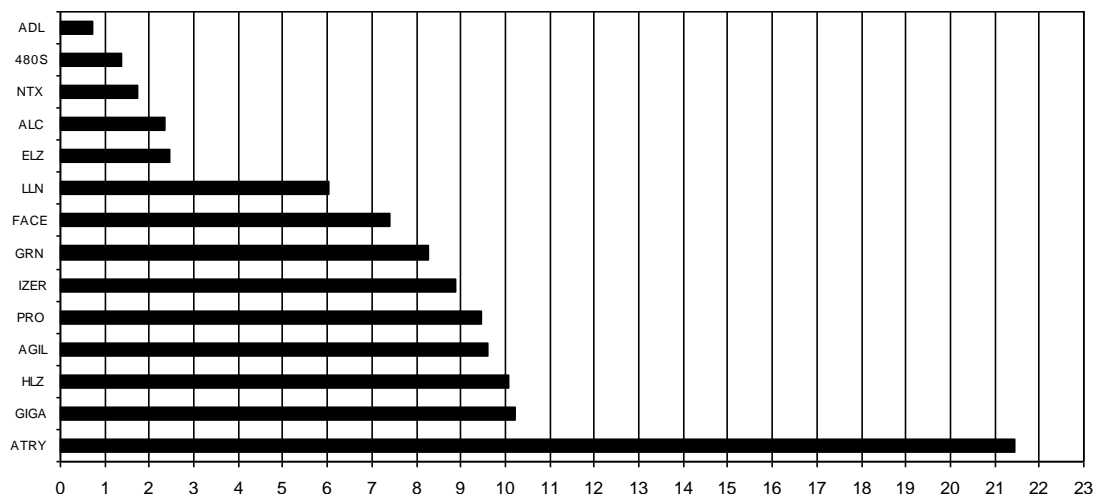
108.133.399

100,00

IBEX GROWTH MARKET 15 de cierre: **2.530,6**

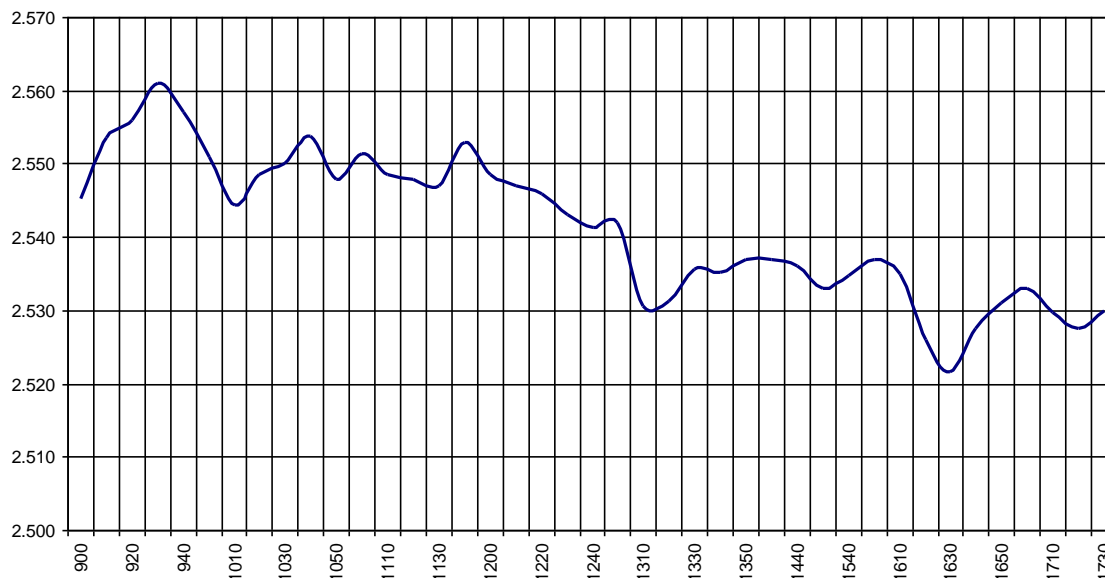
Capitalización Total I: **820.609.721,8750 €**

% Ponderación IBEX GROWTH MARKET 15



IBEX Growth Market 15			Hora			
			Time			
Anterior	Previous	2.538,0	Máximo	Max	2.563,6	09:33:13
Inicial	Open	2.541,9	Mínimo	Min	2.521,9	16:33:07
Cierre	Close	2.530,6	Variación	Change	-7,4	
Medio	Mid	2.541,6	%Variación	%change	-0,29%	

Valor medio del índice IBEX Growth Market 15 cada 10' (Index Average every 10')



Hechos Relevantes Públicos que afectan al IBEX GROWTH MARKET 15

Relevant Facts related to IBEX GROWTH MARKET 15 index