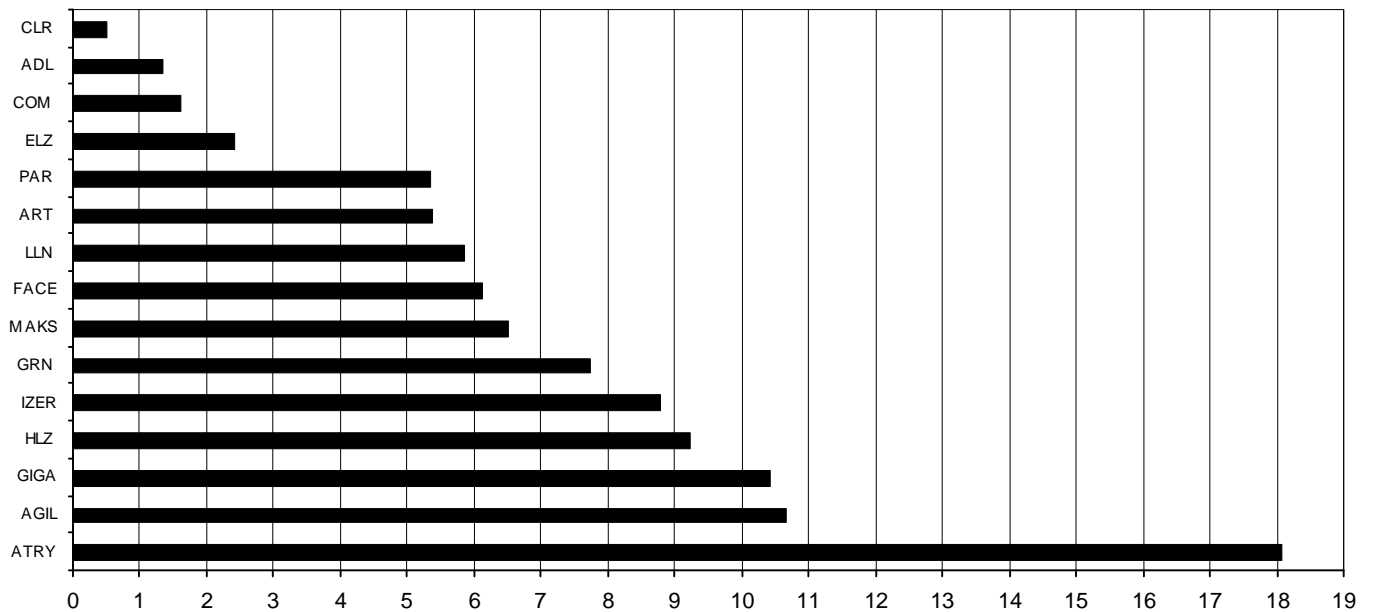


Composición del índice IBEX GROWTH MARKET 15 al cierre de la sesión: 14/10/2021

Cod.	Valor	Ajuste Free-Float	# Acciones	Cierre €	Capitalización €	% Ponderación
Sym.	Company	Free-Float Adjust.	# of Shares	Closing €	Capitalisation €	% Weighting
ATRY	ATRY	90%	15.348.334	10,0000	153.483.340,0000	18,07
AGIL	AGILE CONTEN	60%	12.628.204	7,1800	90.670.504,7200	10,68
GIGA	GIGAS HOSTIN	70%	8.151.056	10,8500	88.438.957,6000	10,41
HLZ	HOLALUZ	30%	6.173.845	12,7000	78.407.831,5000	9,23
IZER	IZERTIS	40%	9.316.444	8,0000	74.531.552,0000	8,78
GRN	GREENALIA	20%	4.246.694	15,5000	65.823.757,0000	7,75
MAKS	MAKING SCIEN	30%	2.118.690	26,1000	55.297.809,0000	6,51
FACE	FACEPHI BIO	80%	12.107.458	4,3000	52.062.069,4000	6,13
LLN	LLEIDANETWOR	60%	9.629.966	5,1600	49.690.624,5600	5,85
ART	ARTECHE	20%	11.418.803	4,0000	45.675.212,0000	5,38
PAR	PARLEM	60%	9.653.474	4,7000	45.371.327,8000	5,34
ELZ	ELZINC	40%	10.284.133	1,9900	20.465.424,6700	2,41
COM	CATENON	60%	11.240.309	1,2300	13.825.580,0700	1,63
ADL	ADL BIONATUR	40%	17.649.466	0,6440	11.366.256,1040	1,34
CLR	CLERHP ESTR.	30%	3.023.030	1,4000	4.232.242,0000	0,50
			142.989.906			100,00

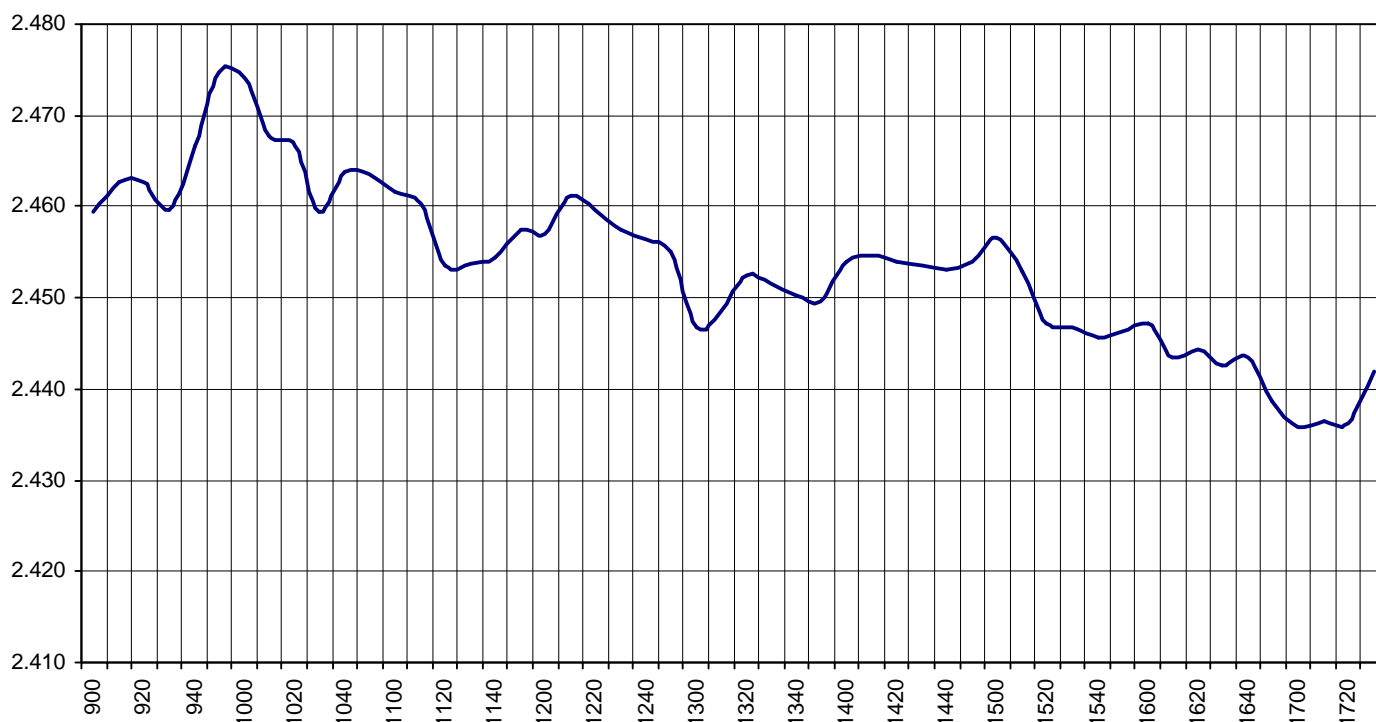
IBEX GROWTH MARKET 15 de cierre: 2.442,6 **Capitalización Total I : 849.342.488,4240 €**

% Ponderación IBEX GROWTH MARKET 15



IBEX Growth Market 15			Hora			
			Time			
Anterior	Previous	2.461,1	Máximo	Max	2.476,6	09:55:26
Inicial	Open	2.459,6	Mínimo	Min	2.431,1	17:22:14
Cierre	Close	2.442,6	Variación	Change	-18,5	
Medio	Mid	2.454,7	%Variación	%change	-0,75%	

Valor medio del índice IBEX Growth Market 15 cada 10' (Index Average every 10')



Hechos Relevantes Públicos que afectan al IBEX GROWTH MARKET 15

Hechos Relevantes que afectan al cálculo del índice IBEX Growth Market 15

18/10/2021 MAKS MAKING SCIENCE AJUSTE POR INTEGRACIÓN DE 45.000 ACCIONES

Relevant Facts related to IBEX GROWTH MARKET 15 index

Relevant Facts related to IBEX Growth Market 15 index calculation

18/10/2021 MAKS MAKING SCIENCE ADJUSTMENT FOR INTEGRATION OF 45,000 SHARES