

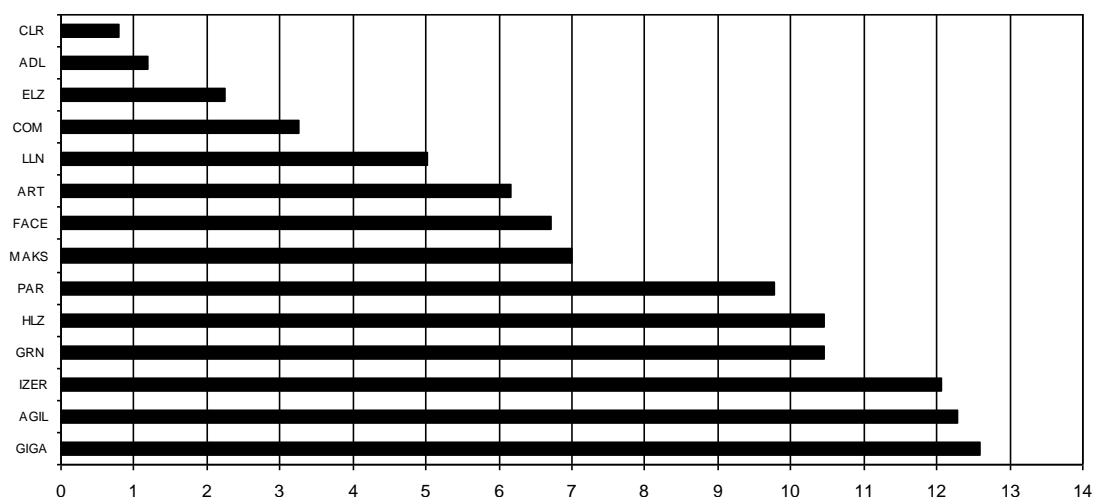
Composición del índice IBEX GROWTH MARKET 15 al cierre de la sesión: 24/02/2022

Cod.	Valor	Ajuste Free-Float	# Acciones	Cierre €	Capitalización €	% Ponderación
Sym.	Company	Free-Float Adjust.	# of Shares	Closing €	Capitalisation €	% Weighting
GIGA	GIGAS HOSTIN	70%	8.151.056	9,3000	75.804.820,8000	12,58
AGIL	AGILE CONTEN	60%	12.628.204	5,8600	74.001.275,4400	12,29
IZER	IZERTIS	40%	9.316.444	7,8000	72.668.263,2000	12,06
GRN	GREENALIA	20%	4.434.194	14,2000	62.965.554,8000	10,45
HLZ	HOLALUZ	30%	6.421.069	9,8000	62.926.476,2000	10,45
PAR	PARLEM	60%	9.653.474	6,1000	58.886.191,4000	9,78
MAKS	MAKING SCIEN	30%	2.291.190	18,4000	42.157.896,0000	7,00
FACE	FACEPHI BIO	80%	12.107.458	3,3400	40.438.909,7200	6,71
ART	ARTECHE	20%	11.418.803	3,2500	37.111.109,7500	6,16
LLN	LLEIDANETWOR	60%	9.629.966	3,1400	30.238.093,2400	5,02
COM	CATENON	60%	11.240.309	1,7500	19.670.540,7500	3,27
ELZ	ELZINC	40%	51.420.666	0,2640	13.575.055,8240	2,25
ADL	ADL BIONATUR	40%	18.333.226	0,3900	7.149.958,1400	1,19
CLR	CLERHP ESTR.	30%	3.023.030	1,5800	4.776.387,4000	0,79
170.069.089						100,00

IBEX GROWTH MARKET 15 de cierre: 2.105,5

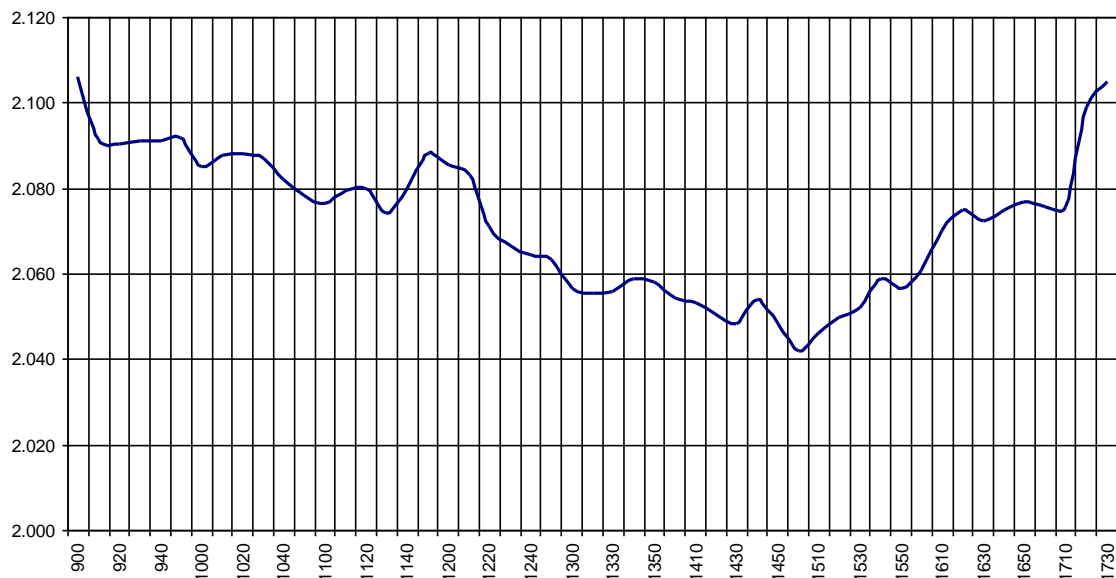
Capitalización Total I : 602.370.532,6640 €

% Ponderación IBEX GROWTH MARKET 15



IBEX Growth Market 15			Hora			
			Time			
Anterior	Previous	2.178,2	Máximo	Max	2.125,2	09:00:10
Inicial	Open	2.125,2	Mínimo	Min	2.041,2	15:09:44
Cierre	Close	2.105,5	Variación	Change	-72,7	
Medio	Mid	2.077,2	%Variación	%change	-3,34%	

Valor medio del índice IBEX Growth Market 15 cada 10' (Index Average every 10')



Hechos Relevantes Públicos que afectan al IBEX GROWTH MARKET 15

Relevant Facts related to IBEX GROWTH MARKET 15 index