

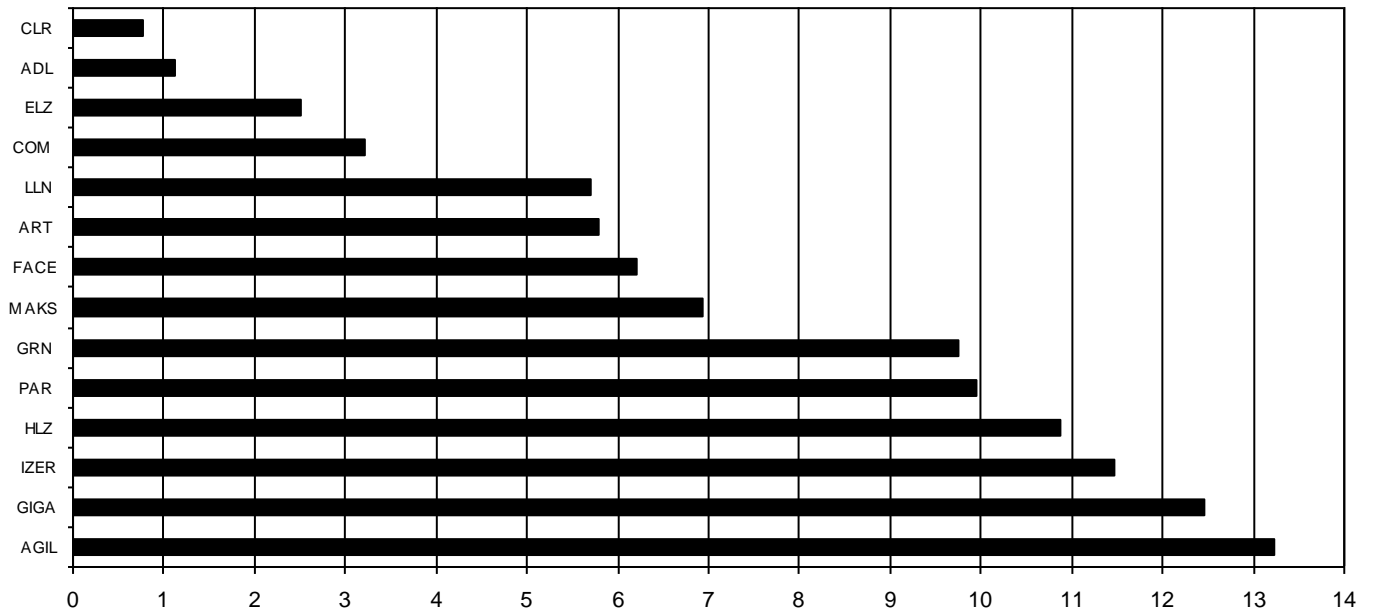
Composición del índice IBEX GROWTH MARKET 15 al cierre de la sesión: 17/03/2022

Cod.	Valor	Ajuste Free-Float	# Acciones	Cierre €	Capitalización €	% Ponderación
Sym.	Company	Free-Float Adjust.	# of Shares	Closing €	Capitalisation €	% Weighting
AGIL	AGILE CONTEN	60%	12.628.204	6,3800	80.567.941,5200	13,24
GIGA	GIGAS HOSTIN	70%	8.151.056	9,3000	75.804.820,8000	12,45
IZER	IZERTIS	40%	9.316.444	7,5000	69.873.330,0000	11,48
HLZ	HOLALUZ	30%	6.421.069	10,3000	66.137.010,7000	10,86
PAR	PARLEM	60%	9.653.474	6,2800	60.623.816,7200	9,96
GRN	GREENALIA	20%	4.434.194	13,4000	59.418.199,6000	9,76
MAKS	MAKING SCIEN	30%	2.291.190	18,4000	42.157.896,0000	6,93
FACE	FACEPHI BIO	80%	12.107.458	3,1200	37.775.268,9600	6,21
ART	ARTECHE	20%	11.418.803	3,0900	35.284.101,2700	5,80
LLN	LLEIDANETWOR	60%	9.629.966	3,6000	34.667.877,6000	5,70
COM	CATENON	60%	11.240.309	1,7400	19.558.137,6600	3,21
ELZ	ELZINC	40%	51.420.666	0,2975	15.297.648,1350	2,51
ADL	ADL BIONATUR	40%	18.528.348	0,3700	6.855.488,7600	1,13
CLR	CLERHP ESTR.	30%	3.023.030	1,5600	4.715.926,8000	0,77
<i>170.264.211</i>						<i>100,00</i>

IBEX GROWTH MARKET 15 de cierre: 2.127,5

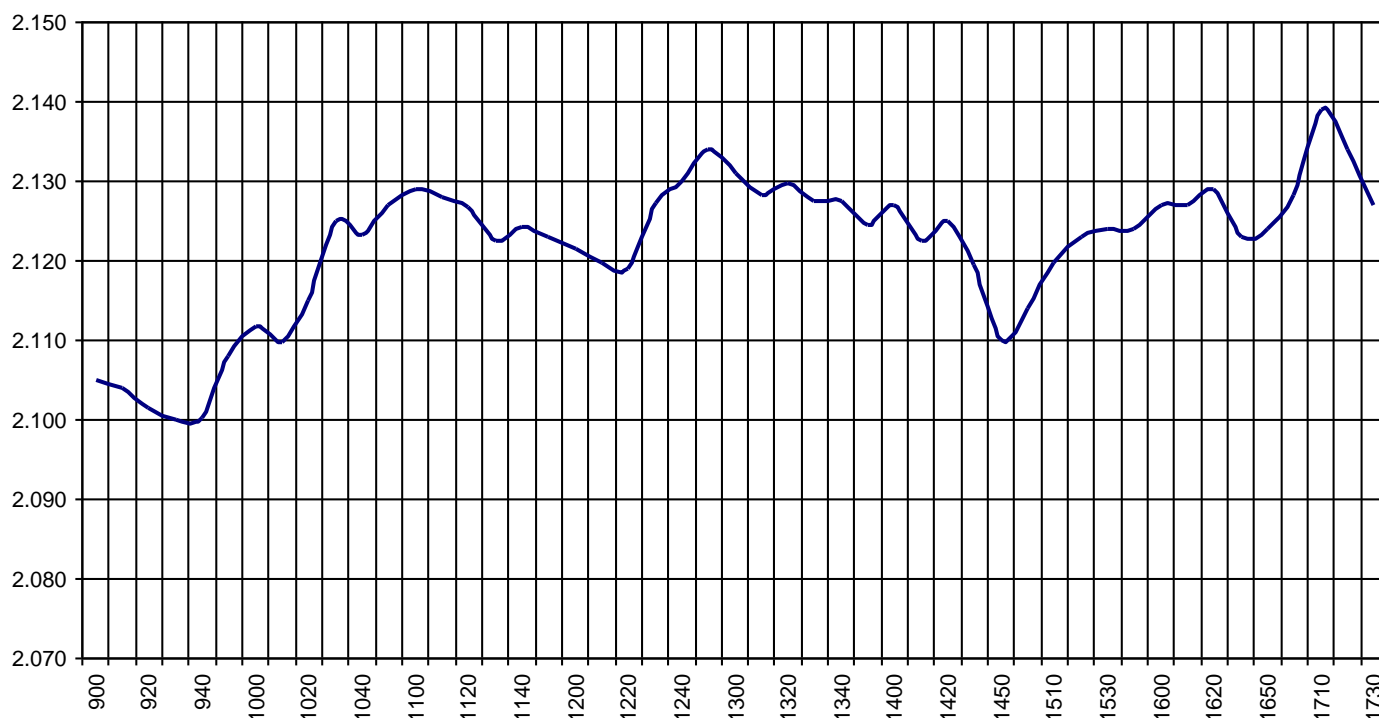
Capitalización Total I : 608.737.464,5250 €

% Ponderación IBEX GROWTH MARKET 15



IBEX Growth Market 15			Hora			
			Time			
Anterior	Previous	2.114,6	Máximo	Max	2.141,0	17:10:32
Inicial	Open	2.113,4	Mínimo	Min	2.098,9	09:43:48
Cierre	Close	2.127,5	Variación	Change	+12,9	
Medio	Mid	2.123,2	%Variación	%change	0,61%	

Valor medio del índice IBEX Growth Market 15 cada 10' (Index Average every 10')



Hechos Relevantes Públicos que afectan al IBEX GROWTH MARKET 15

Hechos Relevantes que afectan al cálculo del índice IBEX Growth Market 15

21/03/2022	ADL	ADL BIONATUR	AJUSTE REV. IBEX GROWTH MARKET® 15: +93.022 ACCS.
21/03/2022	ART	ARTECHE	AJUSTE REV. IBEX GROWTH MARKET® 15 (EXCLUSIÓN)
21/03/2022	CLR	CLERHP ESTR.	AJUSTE REV. IBEX GROWTH MARKET® 15 (EXCLUSIÓN)
21/03/2022	EIDF	EIDF	AJUSTE REV. IBEX GROWTH MARKET® 15 (INCLUSIÓN): +2.716.084 ACCS.
21/03/2022	END	ENDURANCE MO	AJUSTE REV. IBEX GROWTH MARKET® 15 (INCLUSIÓN): +3.429.600 ACCS.
21/03/2022	IZER	IZERTIS	AJUSTE IBEX GROWTH MARKET® 15 (CAMBIO FF): +2.387.841 ACCS.
21/03/2022	MAKS	MAKING SCIEN	AJUSTE REV. IBEX GROWTH MARKET® 15 (EXCLUSIÓN)
21/03/2022	SNG	SINGULAR PEO	AJUSTE REV. IBEX GROWTH MARKET® 15 (INCLUSIÓN): +16.155.758 ACCS.
21/03/2022	TR1	TIER 1 TECH.	AJUSTE REV. IBEX GROWTH MARKET® 15 (INCLUSIÓN): +4.000.000 ACCS.

Relevant Facts related to IBEX GROWTH MARKET 15 index

Relevant Facts related to IBEX Growth Market 15 index calculation

21/03/2022	ADL	ADL BIONATUR	ADJUSTMENT REVIEW IBEX GROWTH MARKET® 15: +93,022 SHARES
21/03/2022	ART	ARTECHE	ADJUSTMENT REVIEW IBEX GROWTH MARKET® 15 (EXCLUSION)
21/03/2022	CLR	CLERHP ESTR.	ADJUSTMENT REVIEW IBEX GROWTH MARKET® 15 (EXCLUSION)

21/03/2022	EIDF	EIDF	ADJUSTMENT REVIEW IBEX GROWTH MARKET® 15 (INCLUSION): +2,716,084 SHARES
21/03/2022	END	ENDURANCE MO	ADJUSTMENT REVIEW IBEX GROWTH MARKET® 15 (INCLUSION): +3,429,600 SHARES
21/03/2022	IZER	IZERTIS	ADJUSTMENT IBEX GROWTH MARKET® 15 (FF FACTOR CHANGE): +2,387,841 SHARES
21/03/2022	MAKS	MAKING SCIEN	ADJUSTMENT REVIEW IBEX GROWTH MARKET® 15 (EXCLUSION)
21/03/2022	SNG	SINGULAR PEO	ADJUSTMENT REVIEW IBEX GROWTH MARKET® 15 (INCLUSION): +16,155,758 SHARES
21/03/2022	TR1	TIER 1 TECH.	ADJUSTMENT REVIEW IBEX GROWTH MARKET® 15 (INCLUSION): +4,000,000 SHARES