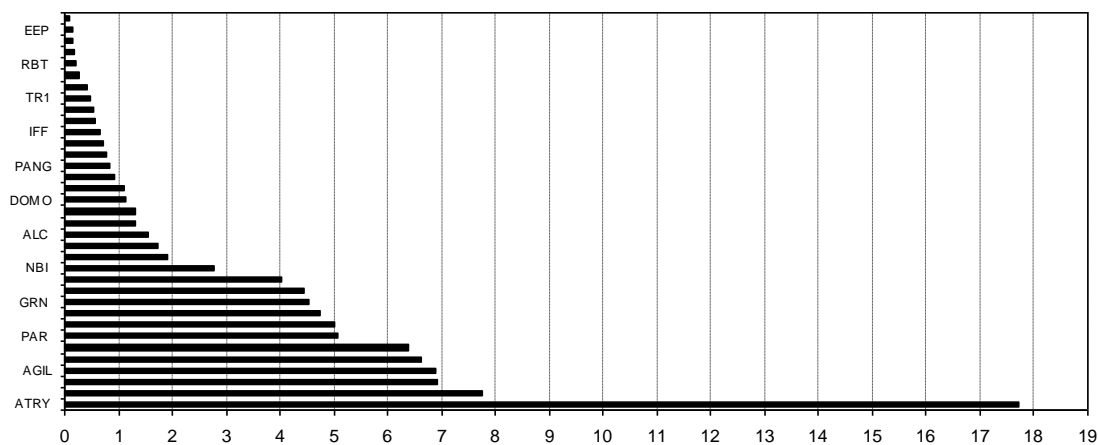


Composición del índice IBEX GROWTH MARKET ALL SHARE al cierre de: 21/07/2021 antes de ajuste
Index constituents of IBEX GROWTH MARKET ALL SHARE at the closing of: 21/07/2021 before adjustment

Cód. Sym.	Valor Company	Ajuste Free-Float Free-Float Adjust.	# Acciones # Shares	Cierre € Closing €	Capitalización € Capitalisation €	% Ponderación % Weighting
ATRY	ATRY	70%	21.123.518	9,5000	200.673.421,0000	17,73
HLZ	HOLALUZ	30%	6.173.845	14,2000	87.668.599,0000	7,74
PRO	PROEDUCA	10%	4.517.897	17,3500	78.385.512,9500	6,92
AGIL	AGILE CONTEN	50%	10.523.503	7,4200	78.084.392,2600	6,90
GIGA	GIGAS HOSTIN	100%	7.719.365	9,7200	75.032.227,8000	6,63
IZER	IZERTIS	40%	9.047.892	7,9800	72.202.178,1600	6,38
PAR	PARLEM	80%	12.871.298	4,4500	57.277.276,1000	5,06
FACE	FACEPHI BIO	80%	12.107.458	4,6900	56.783.978,0200	5,02
LLN	LLEIDANETWOR	60%	9.629.966	5,5900	53.831.509,9400	4,76
GRN	GREENALIA	20%	4.246.694	12,1000	51.384.997,4000	4,54
MAKS	MAKING SCIEN	30%	2.118.690	23,8000	50.424.822,0000	4,45
ART	ARTECHE	20%	11.418.803	4,0000	45.675.212,0000	4,04
NBI	NBI BEARINGS	40%	4.932.107	6,4000	31.565.484,8000	2,79
ELZ	ELZINC	40%	10.284.133	2,1000	21.596.679,3000	1,91
EIDF	EIDF	20%	2.716.084	7,2500	19.691.609,0000	1,74
ALC	ALTIA CONSUL	10%	687.819	25,4000	17.470.602,6000	1,54
NTX	NETEX	40%	3.546.244	4,2200	14.965.149,6800	1,32
COM	CATENON	70%	13.113.694	1,1400	14.949.611,1600	1,32
DOMO	DOMO ACTIVOS	60%	6.873.008	1,8500	12.715.064,8000	1,12
GRI	GRIÑO	20%	6.120.277	2,0400	12.485.365,0800	1,10
480S	CUATROOCHENT	30%	667.372	15,7000	10.477.740,4000	0,93
PANG	PANGAEA ONC	30%	5.617.534	1,7000	9.549.807,8000	0,84
KOM	KOMPUESTOS	30%	3.646.710	2,3800	8.679.169,8000	0,77
ALQ	ALQUIBER	30%	1.684.435	4,8800	8.220.042,8000	0,73
IFF	IFFE FUTURA	50%	11.499.545	0,6400	7.359.708,8000	0,65
SEC	SECUOYA	10%	807.357	7,8500	6.337.752,4500	0,56
ADL	ADL BIONATUR	30%	12.122.595	0,5100	6.182.523,4500	0,55
TR1	TIER 1 TECH.	30%	300.000	17,7000	5.310.000,0000	0,47
CLR	CLERHP ESTR.	30%	3.023.030	1,5800	4.776.387,4000	0,42
MED	MEDCOM TECH	20%	2.643.692	1,2000	3.172.430,4000	0,28
RBT	ROBOT	30%	855.145	2,6600	2.274.685,7000	0,20
MONI	MONDO TV	20%	11.870.972	0,1830	2.172.387,8760	0,19
CMM	COMMCENTER	30%	1.981.921	0,9200	1.823.367,3200	0,16
EOP	EUROESPES	40%	4.312.069	0,3820	1.647.210,3580	0,15
CLE	CLEVER GLO.	30%	4.716.720	0,2360	1.113.145,9200	0,10
225.521.392						100,00

IBEX GROWTH MARKET ALL SHARE: 1.884,1 Capitalización total: 1.131.960.053,524

% Ponderación IBEX GROWTH MARKET ALL SHARE



Composición del índice IBEX GROWTH MARKET ALL SHARE al cierre de: 21/07/2021 después de ajuste
Index constituents of IBEX GROWTH MARKET ALL SHARE at the closing of: 21/07/2021 after adjustment

Cód. Sym	Valor Company	Ajuste Free-Float Free-Float Adjust.	# Acciones # Shares	Cierre € Closing €	Capitalización € Capitalisation €	% Ponderación % Weighting
ATRY	ATRY	70%	21.123.518	9,5000	200.673.421,0000	17,54
HLZ	HOLALUZ	30%	6.173.845	14,2000	87.668.599,0000	7,66
PRO	PROEDUCA	10%	4.517.897	17,3500	78.385.512,9500	6,85
AGIL	AGILE CONTEN	50%	10.523.503	7,4200	78.084.392,2600	6,82
GIGA	GIGAS HOSTIN	100%	7.719.365	9,7200	75.032.227,8000	6,56
IZER	IZERTIS	40%	9.047.892	7,9800	72.202.178,1600	6,31
PAR	PARLEM	80%	12.871.298	4,4500	57.277.276,1000	5,01
FACE	FACEPHI BIO	80%	12.107.458	4,6900	56.783.978,0200	4,96
LLN	LLEIDANETWOR	60%	9.629.966	5,5900	53.831.509,9400	4,70
GRN	GREENALIA	20%	4.246.694	12,1000	51.384.997,4000	4,49
MAKS	MAKING SCIEN	30%	2.118.690	23,8000	50.424.822,0000	4,41
ART	ARTECHE	20%	11.418.803	4,0000	45.675.212,0000	3,99
NBI	NBI BEARINGS	40%	4.932.107	6,4000	31.565.484,8000	2,76
ELZ	ELZINC	40%	10.284.133	2,1000	21.596.679,3000	1,89
EIDF	EIDF	20%	2.716.084	7,2500	19.691.609,0000	1,72
ALC	ALTIA CONSUL	10%	687.819	25,4000	17.470.602,6000	1,53
NTX	NETEX	40%	3.546.244	4,2200	14.965.149,6800	1,31
COM	CATENON	70%	13.113.694	1,1400	14.949.611,1600	1,31
DOMO	DOMO ACTIVOS	60%	6.873.008	1,8500	12.715.064,8000	1,11
GRI	GRIÑO	20%	6.120.277	2,0400	12.485.365,0800	1,09
END	ENDURANCE MO	40%	3.429.600	3,6000	12.346.560,0000	1,08
480S	CUATROOCHENT	30%	667.372	15,7000	10.477.740,4000	0,92
PANG	PANGAEA ONC	30%	5.617.534	1,7000	9.549.807,8000	0,83
KOM	KOMPUESTOS	30%	3.646.710	2,3800	8.679.169,8000	0,76
ALQ	ALQUIBER	30%	1.684.435	4,8800	8.220.042,8000	0,72
IFF	IFFE FUTURA	50%	11.499.545	0,6400	7.359.708,8000	0,64
SEC	SECUOYA	10%	807.357	7,8500	6.337.752,4500	0,55
ADL	ADL BIONATUR	30%	12.122.595	0,5100	6.182.523,4500	0,54
TR1	TIER 1 TECH.	30%	300.000	17,7000	5.310.000,0000	0,46
CLR	CLERHP ESTR.	30%	3.023.030	1,5800	4.776.387,4000	0,42
MED	MEDCOM TECH	20%	2.643.692	1,2000	3.172.430,4000	0,28
RBT	ROBOT	30%	855.145	2,6600	2.274.685,7000	0,20
MONI	MONDO TV	20%	11.870.972	0,1830	2.172.387,8760	0,19
CMM	COMMCENTER	30%	1.981.921	0,9200	1.823.367,3200	0,16
EEP	EUROESPE	40%	4.312.069	0,3820	1.647.210,3580	0,14
CLE	CLEVER GLO.	30%	4.716.720	0,2360	1.113.145,9200	0,10

228.950.992

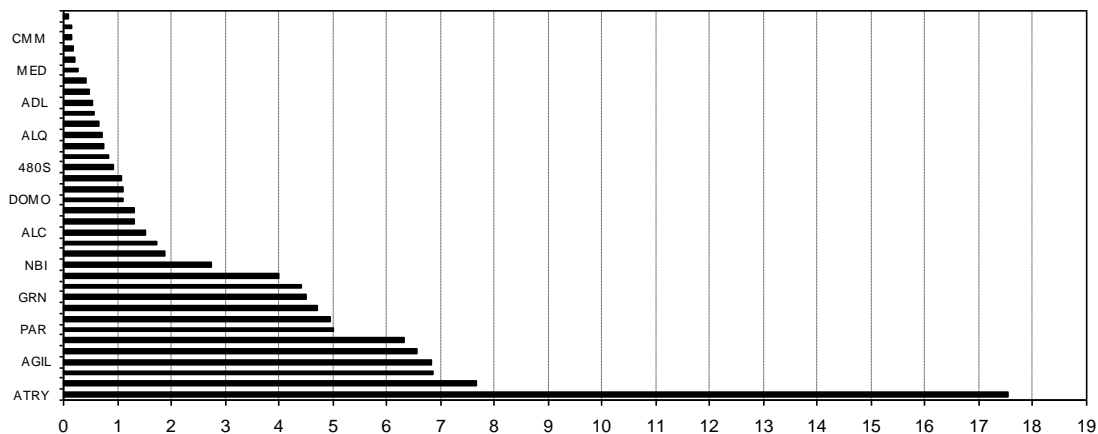
100,00

IBEX GROWTH MARKET ALL SHARE: 1.884,1

Capitalización total:

1.144.306.613,524 €

% Ponderación IBEX GROWTH MARKET ALL SHARE



Informe de ajuste IBEX GROWTH MARKET ALL SHARE

IBEX GROWTH MARKET ALL SHARE adjustment report

21/07/2021 18:12:02

Indice antes de ajuste	Indice después de ajuste	Capitalización antes de ajuste	Capitalización después de ajuste	"J" de ajuste	Divisor IBEX GROWTH AS
<i>Index before adjustment</i>	<i>Index after adjustment</i>	<i>Market Capitalisation before adjustment</i>	<i>Market Capitalisation after adjustment</i>	<i>"J" (Mkt. K2 - K1)</i>	<i>IBEX GROWTH AS Divisor</i>
1.884,1	1.884,1	1.131.960.053,524	1.144.306.613,524	12.346.560,000	607.360

Símbolo	Títulos antes de ajuste	Títulos después de ajuste	Capitalización antes de ajuste	Capitalización después de ajuste	Diferencia de Capitalizaciones
<i>Sym.</i>	<i>Shares before adjustment</i>	<i>Shares after adjustment</i>	<i>Capitalisation before adjustment</i>	<i>Capitalisation after adjustment</i>	<i>Capitalisation difference</i>

Bajas en IBEX GROWTH MARKET ALL SHARE

IBEX GROWTH MARKET ALL SHARE deletions

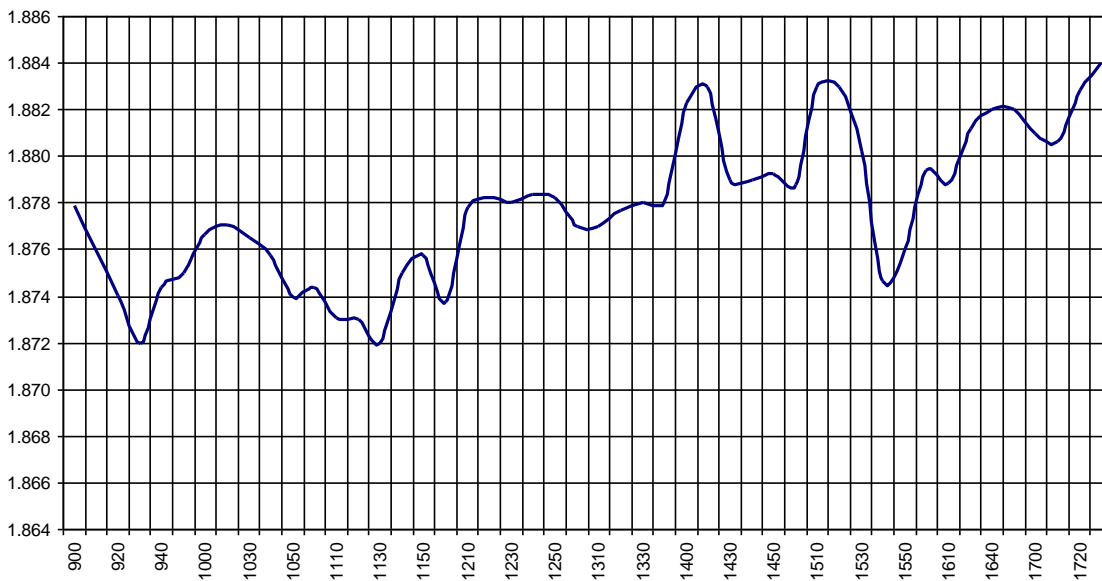
Altas en IBEX GROWTH MARKET ALL SHARE

IBEX GROWTH MARKET ALL SHARE additions

END	0	3.429.600	0,0000	12.346.560,0000	12.346.560,0000
-----	---	-----------	--------	-----------------	-----------------

IBEX Growth Market All Share						Hora
						Time
Anterior	Previous	1.881,7	Máximo	Max	1.886,3	14:07:13
Inicial	Open	1.878,4	Mínimo	Min	1.870,9	11:19:12
Cierre	Close	1.884,1	Variación	Change	+2,4	
Medio	Mid	1.877,9	%Variación	%change	0,13%	

Valor medio del índice IBEX Growth Market All Share cada 10' (Index Average every 10')



Hechos Relevantes Públicos que afectan al IBEX GROWTH MARKET ALL SHARE index

Hechos Relevantes que afectan al cálculo del índice IBEX Growth Market All Share

22/07/2021	END	ENDURANCE	AJUSTE POR INCLUSIÓN IBEX GROWTH ALL SHARE: 3.429.600 ACCS.
29/07/2021	MIO	MIO GROUP	AJUSTE POR INCLUSIÓN IBEX GROWTH ALL SHARE: 1.333.333 ACCS.

Relevant Facts related to IBEX GROWTH MARKET ALL SHARE index

Relevant Facts related to IBEX Growth Market All Share index calculation

22/07/2021	END	ENDURANCE	ADJUSTMENT FOR INCLUSION IBEX GROWTH ALL SHARE: 3,429,600 SHARES
29/07/2021	MIO	MIO GROUP	ADJUSTMENT FOR INCLUSION IBEX GROWTH ALL SHARE: 1,333,333 SHARES