

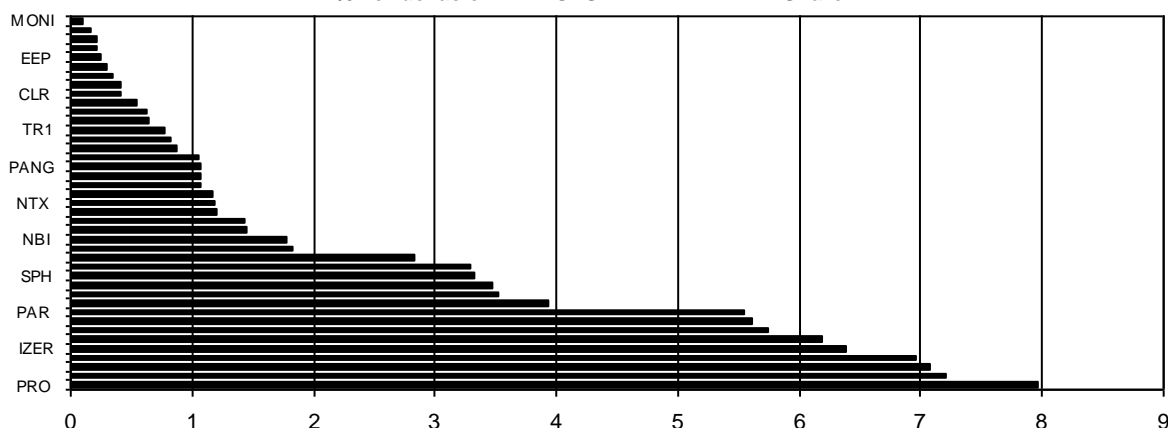
## Composición del índice IBEX GROWTH MARKET All Share al cierre de la sesión: 16/03/2022

Cod.	Valor	Ajuste Free-Float	# Acciones	Cierre €	Capitalización €	% Ponderación
Sym.	Company	Free-Float Adjust.	# of Shares	Closing €	Capitalisation €	% Weighting
PRO	PROEDUCA	10%	4.517.897	18,8500	85.162.358,4500	7,96
GIGA	GIGAS HOSTIN	70%	8.151.056	9,4600	77.108.989,7600	7,20
EIDF	EIDF	20%	2.716.084	27,9000	75.778.743,6000	7,08
AGIL	AGILE CONTEN	60%	12.628.204	5,9000	74.506.403,6000	6,96
IZER	IZERTIS	40%	9.316.444	7,3400	68.382.698,9600	6,39
HLZ	HOLALUZ	30%	6.421.069	10,3000	66.137.010,7000	6,18
GRN	GREENALIA	20%	4.434.194	13,8500	61.413.586,9000	5,74
SNG	SINGULAR PEO	30%	16.155.758	3,7200	60.099.419,7600	5,62
PAR	PARLEM	60%	9.653.474	6,1400	59.272.330,3600	5,54
MAKS	MAKING SCIEN	30%	2.291.190	18,4000	42.157.896,0000	3,94
ART	ARTECHE	20%	11.418.803	3,3000	37.682.049,9000	3,52
FACE	FACEPHI BIO	80%	12.107.458	3,0650	37.109.358,7700	3,47
SPH	SOLARPROFIT	20%	3.925.800	9,0600	35.567.748,0000	3,32
LLN	LLEIDANETWOR	60%	9.629.966	3,6600	35.245.675,5600	3,29
LLYC	LLYC	20%	2.327.914	13,0000	30.262.882,0000	2,83
COM	CATENON	60%	11.240.309	1,7400	19.558.137,6600	1,83
NBI	NBI BEARINGS	30%	3.699.080	5,1500	19.050.262,0000	1,78
ALC	ALTIA CONSUL	10%	687.819	22,6000	15.544.709,4000	1,45
ELZ	ELZINC	40%	51.420.666	0,2995	15.400.489,4670	1,44
AMEN	AETERNAL MEN	10%	1.323.217	9,7000	12.835.204,9000	1,20
NTX	NETEX	40%	3.546.244	3,5600	12.624.628,6400	1,18
DOM	DOMO ACTIVOS	60%	6.873.008	1,8100	12.440.144,4800	1,16
480S	CUATROOCHENT	30%	672.293	17,1000	11.496.210,3000	1,07
END	ENDURANCE MO	40%	3.429.600	3,3500	11.489.160,0000	1,07
PANG	PANGAEA ONC	30%	6.759.981	1,6900	11.424.367,8900	1,07
GRI	GRIÑO	20%	6.120.277	1,8300	11.200.106,9100	1,05
ALQ	ALQUIBER	30%	1.684.435	5,5000	9.264.392,5000	0,87
MIO	MIOGROUP	20%	1.333.333	6,6000	8.799.997,8000	0,82
TR1	TIER 1 TECH.	40%	4.000.000	2,0500	8.200.000,0000	0,77
KOM	KOMPUESTOS	30%	3.646.710	1,9000	6.928.749,0000	0,65
ADL	ADL BIONATUR	40%	18.528.348	0,3600	6.670.205,2800	0,62
SEC	SECUOYA	10%	807.357	7,1000	5.732.234,7000	0,54
CLR	CLERHP ESTR.	30%	3.023.030	1,4600	4.413.623,8000	0,41
CMM	COMMCENTER	30%	1.981.921	2,1800	4.320.587,7800	0,40
IFF	IFFE FUTURA	30%	6.899.727	0,5400	3.725.852,5800	0,35
CITY	INTERCITY	70%	3.551.119	0,8930	3.171.149,2670	0,30
EEP	EUROESPES	40%	4.733.162	0,5700	2.697.902,3400	0,25
MED	MEDCOM TECH	20%	2.643.692	0,8800	2.326.448,9600	0,22
CLE	CLEVER GLO.	30%	7.526.220	0,2960	2.227.761,1200	0,21
RBT	ROBOT	30%	855.145	2,0400	1.744.495,8000	0,16
MONI	MONDO TV	20%	4.000.000	0,2840	1.136.000,0000	0,11
						276.682.004
						100,00

IBEX GROWTH MARKET All Share de cierre: 1.831,8

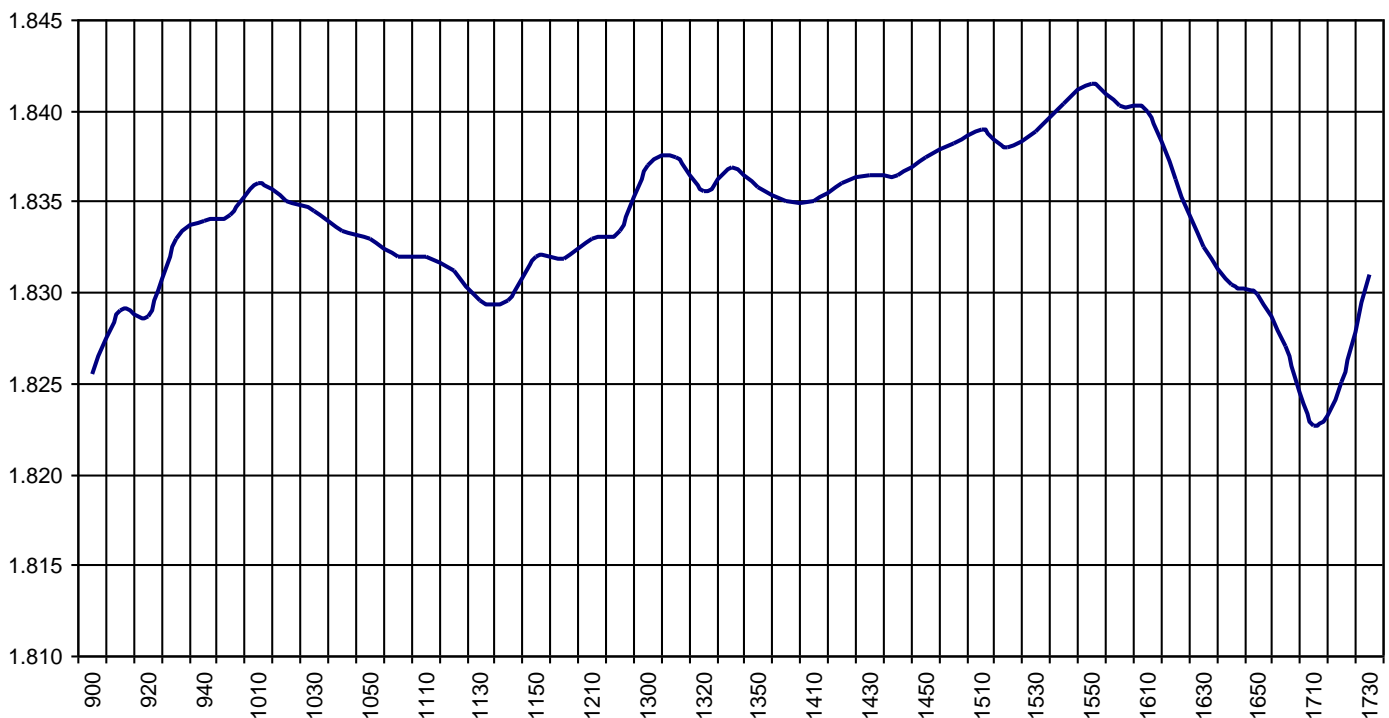
Capitalización Total: 1.070.309.974,8940 €

% Ponderación IBEX GROWTH MARKET All Share



IBEX Growth Market All Share			Hora			
			Time			
Anterior	Previous	1.825,7	Máximo	Max	1.842,6	15:46:52
Inicial	Open	1.825,6	Mínimo	Min	1.822,2	17:14:05
Cierre	Close	1.831,8	Variación	Change	+6,1	
Medio	Mid	1.834,0	%Variación	%change	0,33%	

Valor medio del índice IBEX Growth Market All Share cada 10' (Index Average every 10')



## Hechos Relevantes Públicos que afectan al IBEX GROWTH MARKET All Share

### Hechos Relevantes que afectan al cálculo del índice IBEX Growth Market All Share

18/03/2022	ENRS	ENERSIDE	AJUSTE POR INCLUSIÓN IBEX GROWTH MARKET® ALL SHARE: 11.197.535 ACCS.
21/03/2022	ADL	ADL BIONATUR	AJUSTE REV. IBEX GROWTH MARKET® ALL SHARE: +93.022 ACCS.
21/03/2022	CLR	CLERHP ESTR.	AJUSTE IBEX GROWTH MARKET® ALL SHARE (CAMBIO FF): +1.007.677 ACCS.
21/03/2022	EFP	EUROESPES	AJUSTE IBEX GROWTH MARKET® ALL SHARE (CAMBIO FF): +1.183.291 ACCS.
21/03/2022	IFF	IFFE FUTURA	AJUSTE IBEX GROWTH MARKET® ALL SHARE (CAMBIO FF): +2.299.909 ACCS.
21/03/2022	CITY	INTERCITY	AJUSTE IBEX GROWTH MARKET® ALL SHARE (CAMBIO FF): +1.014.605 ACCS.
21/03/2022	IZER	IZERTIS	AJUSTE IBEX GROWTH MARKET® ALL SHARE (CAMBIO FF): +2.387.841 ACCS.
21/03/2022	MIO	MIOGROUP	AJUSTE IBEX GROWTH MARKET® ALL SHARE (CAMBIO FF): +2.666.667 ACCS.
21/03/2022	PANG	PANGAEA ONC	AJUSTE IBEX GROWTH MARKET® ALL SHARE (CAMBIO FF): -2.210.414 ACCS.
29/03/2022	VYT	VYTRUS BIOTE	AJUSTE POR INCLUSIÓN IBEX GROWTH MARKET® ALL SHARE: 2.846.040 ACCS.

## Relevant Facts related to IBEX GROWTH MARKET All Share index

### Relevant Facts related to IBEX Growth Market All Share index calculation

18/03/2022	ENRS	ENERSIDE	ADJUSTMENT FOR INCLUSION IBEX GROWTH MARKET® ALL SHARE: 11.197.535 SHARES
------------	------	----------	---

21/03/2022	ADL	ADL BIONATUR	ADJUSTMENT REVIEW IBEX GROWTH MARKET® ALL SHARE: +93,022 SHARES
21/03/2022	CLR	CLERHP ESTR.	ADJUSTMENT IBEX GROWTH MARKET® ALL SHARE (FF FACTOR CHANGE): +1,007,677 SHARES
21/03/2022	EEP	EUROESPES	ADJUSTMENT IBEX GROWTH MARKET® ALL SHARE (FF FACTOR CHANGE): +1,183,291 SHARES
21/03/2022	IFF	IFFE FUTURA	ADJUSTMENT IBEX GROWTH MARKET® ALL SHARE (FF FACTOR CHANGE): +2,299,909 SHARES
21/03/2022	CITY	INTERCITY	ADJUSTMENT IBEX GROWTH MARKET® ALL SHARE (FF FACTOR CHANGE): +1,014,605 SHARES
21/03/2022	IZER	IZERTIS	ADJUSTMENT IBEX GROWTH MARKET® ALL SHARE (FF FACTOR CHANGE): +2,387,841 SHARES
21/03/2022	MIO	MIOGROUP	ADJUSTMENT IBEX GROWTH MARKET® ALL SHARE (FF FACTOR CHANGE): +2,666,667 SHARES
21/03/2022	PANG	PANGAEA ONC	ADJUSTMENT IBEX GROWTH MARKET® ALL SHARE (FF FACTOR CHANGE): -2,210,414 SHARES
29/03/2022	VYT	VYTRUS BIOTE	ADJUSTMENT FOR INCLUSION IBEX GROWTH MARKET® ALL SHARE: 2,846,040 SHARES