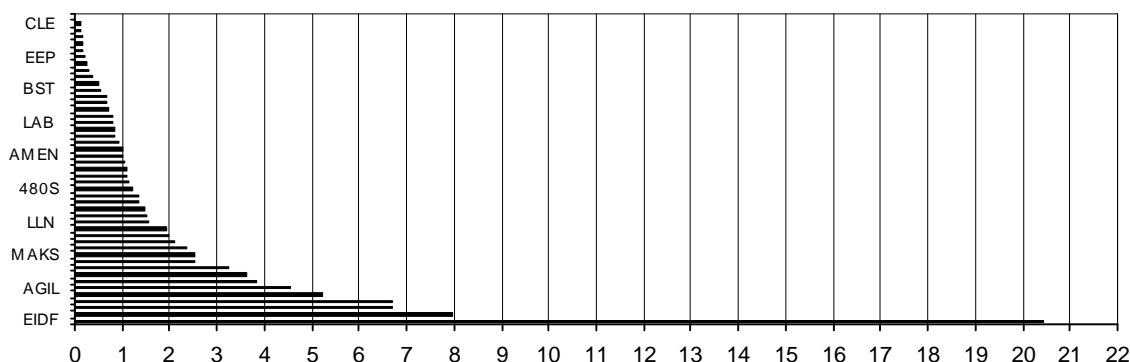


## Composición del índice IBEX GROWTH MARKET All Share al cierre de la sesión: 22/11/2022

Cod.	Valor	Ajuste Free-Float	# Acciones	Cierre €	Capitalización €	% Ponderación
Sym.	Company	Free-Float Adjust.	# of Shares	Closing €	Capitalisation €	% Weighting
EIDF	EIDF	20%	11.569.326	21,8600	252.905.466,3600	20,46
IZER	IZERTIS	50%	12.323.398	8,0000	98.587.184,0000	7,98
GIGA	GIGAS HOSTIN	70%	8.151.056	10,1500	82.733.218,4000	6,69
PRO	PROEDUCA ALT	10%	4.517.897	18,3000	82.677.515,1000	6,69
SNG	SNGULAR	30%	16.155.758	4,0000	64.623.032,0000	5,23
AGIL	AGILE CONTEN	60%	13.865.767	4,0600	56.295.014,0200	4,55
HLZ	HOLALUZ	30%	6.566.616	7,2000	47.279.635,2000	3,82
ART	ARTECHE	20%	11.418.803	3,9200	44.761.707,7600	3,62
ENRS	ENERSIDE ENE	20%	7.465.023	5,4000	40.311.124,2000	3,26
PAR	PARLEM	60%	9.653.474	3,2600	31.470.325,2400	2,55
MAKS	MAKING SCIEN	40%	3.314.387	9,4000	31.155.237,8000	2,52
FACE	FACEPHI BIO	80%	13.541.401	2,1700	29.384.840,1700	2,38
SPH	SOLARPROFIT	20%	3.925.800	6,6600	26.145.828,0000	2,12
MIO	MIOGROUP	60%	4.000.000	6,1500	24.600.000,0000	1,99
LLYC	LLYC	20%	2.327.914	10,2000	23.744.722,8000	1,92
LLN	LLEIDANETWOR	60%	9.629.966	1,9900	19.163.632,3400	1,55
APG	AXON	20%	1.061.487	17,8000	18.894.468,6000	1,53
ALC	ALTIA CONSUL	10%	687.819	26,8000	18.433.549,2000	1,49
NBI	NBI BEARINGS	30%	3.699.080	4,5600	16.867.804,8000	1,36
COM	CATENON	60%	11.240.309	1,4900	16.748.060,4100	1,35
480S	CUATROOCHENT	50%	1.360.948	11,0000	14.970.428,0000	1,21
PANG	PANGAEA ONC	30%	9.146.931	1,5500	14.177.743,0500	1,15
USI	UMBRELLA	10%	2.155.800	6,4000	13.797.120,0000	1,12
ELZ	ELZINC	40%	51.420.666	0,2600	13.369.373,1600	1,08
ALQ	ALQUIBER QUA	30%	1.684.435	7,6000	12.801.706,0000	1,04
AMEN	AETERNAL M.	10%	1.323.217	9,5000	12.570.561,5000	1,02
HAN	HANNUN	90%	28.144.239	0,4420	12.439.753,6380	1,01
IFF	IFFE FUTURA	50%	18.896.539	0,6200	11.715.854,1800	0,95
DOM	DOMO ACTIVOS	60%	6.873.008	1,5400	10.584.432,3200	0,86
GRI	GRIÑO	20%	6.120.277	1,7200	10.526.876,4400	0,85
LAB	LABIANA	40%	2.888.502	3,4000	9.820.906,8000	0,79
VYT	VYTRUS BIOTE	40%	2.846.040	3,4400	9.790.377,6000	0,79
CLR	CLERHP ESTR.	40%	4.614.281	1,8700	8.628.705,4700	0,70
NTX	NETEX	40%	3.546.244	2,4000	8.510.985,6000	0,69
TR1	TIER1 TECHNO	40%	4.000.000	2,1200	8.480.000,0000	0,69
BST	BIOTECHNOLOG	50%	25.424.666	0,2700	6.864.659,8200	0,56
END	ENDURANCE MO	40%	3.667.081	1,7300	6.344.050,1300	0,51
SEC	SECUOYA	10%	807.357	5,5500	4.480.831,3500	0,36
CMM	COMMCENTER	30%	1.981.921	1,9600	3.884.565,1600	0,31
KOM	KOMPUESTOS	30%	3.646.710	0,8600	3.136.170,6000	0,25
EEP	EUROESPES	40%	4.733.162	0,5400	2.555.907,4800	0,21
MED	MEDCOM TECH	20%	2.643.692	0,8600	2.273.575,1200	0,18
RBT	ROBOT, S.A.	40%	1.140.193	1,8000	2.052.347,4000	0,17
SAI	SUBSTRATE AI	40%	8.844.338	0,2200	1.945.754,3600	0,16
MONI	MONDO TV	30%	6.000.000	0,2640	1.584.000,0000	0,13
CLE	CLEVER GLO.	30%	7.526.220	0,2080	1.565.453,7600	0,13
CITY	INTERCITY	80%	4.646.727	0,1100	511.139,9700	0,04
371.198.475						100,00

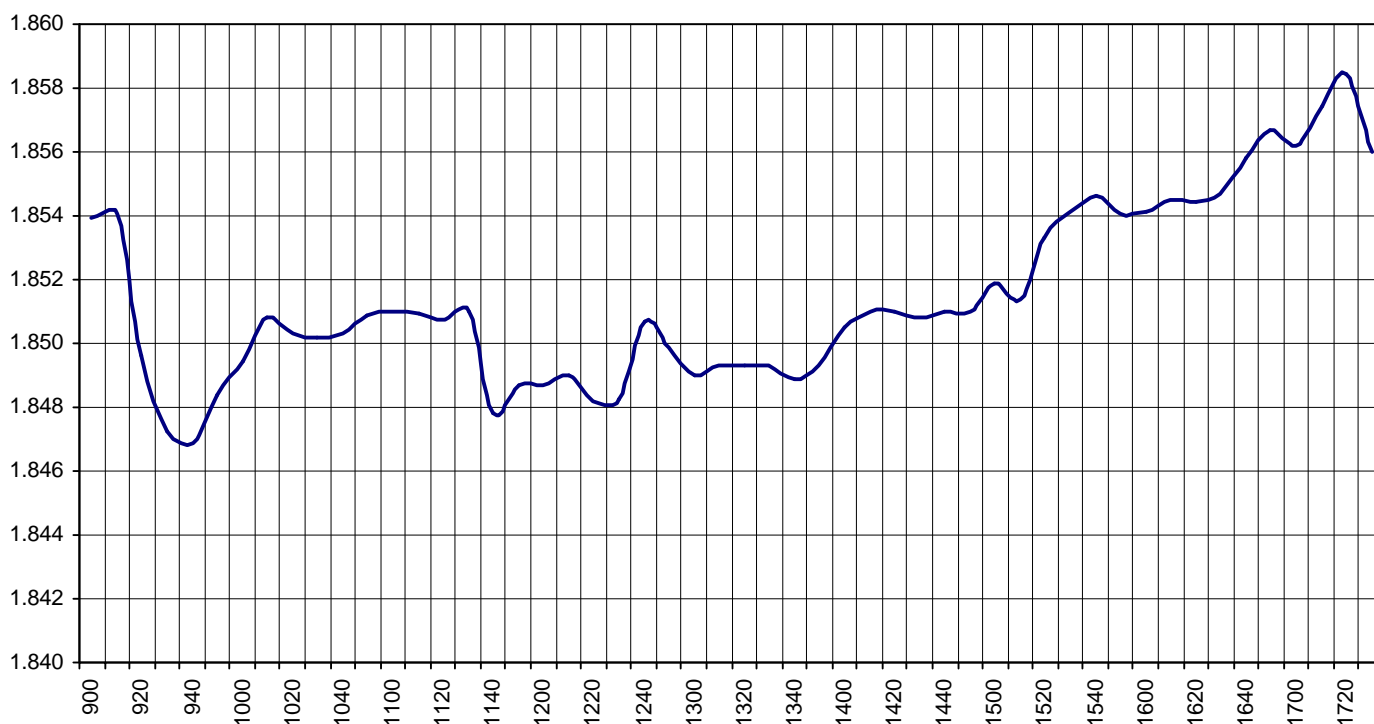
**IBEX GROWTH MARKET AS de cierre: 1.856,8 Capitalización Total IBEX GROWTH MARKET AS: 1.236.165.645,3080 €**

**% Ponderación IBEX GROWTH MARKET All Share**



IBEX Growth Market All Share			Hora			
			Time			
Anterior	Previous	1.853,0	Máximo	Max	1.859,8	17:25:52
Inicial	Open	1.853,3	Mínimo	Min	1.845,9	09:41:20
Cierre	Close	1.856,8	Variación	Change	+3,8	
Medio	Mid	1.852,2	%Variación	%change	0,21%	

Valor medio del índice IBEX Growth Market All Share cada 10' (Index Average every 10')



**Hechos Relevantes Públicos que afectan al IBEX GROWTH MARKET All Share**

**Relevant Facts related to IBEX GROWTH MARKET All Share index**